

Recombinant Galectin-1 Monoclonal Antibody

catalog number: **AN301528L**

Note: Centrifuge before opening to ensure complete recovery of vial contents.

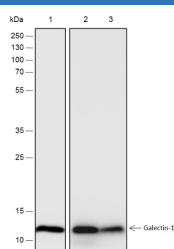
Description

Reactivity	Human;Rat;Mouse
Immunogen	Recombinant human Galectin-1 fragment
Host	Rabbit
Isotype	IgG, κ
Clone	A227
Purification	Protein A purified
Buffer	PBS, 50% glycerol, 0.05% Proclin 300, 0.05% protein protectant.

Applications

WB	1:500-1:2000
IHC	1:500-1:1000

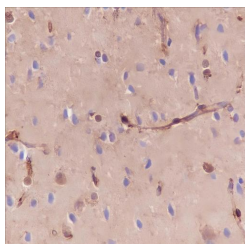
Data



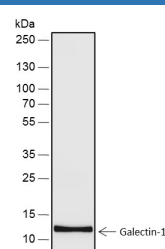
Western Blot with Galectin-1 Monoclonal Antibody at dilution of 1:2000. Lane 1: HL60, Lane 2: Mouse spleen, Lane 3: Rat

heart

Observed-MW:15 kDa
Calculated-MW:15 kDa

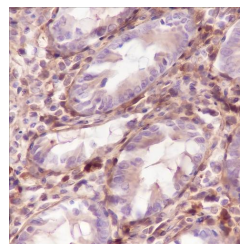


Immunohistochemistry of paraffin-embedded Human cerebrum using Galectin-1 Monoclonal Antibody at dilution of 1:1000.



Western Blot with Galectin-1 Monoclonal Antibody at dilution of 1:20000. Lane 1: NIH/3T3

Observed-MW:15 kDa
Calculated-MW:15 kDa



Immunohistochemistry of paraffin-embedded Human colon using Galectin-1 Monoclonal Antibody at dilution of 1:1000.

Preparation & Storage

Storage	Store at -20°C Valid for 12 months. Avoid freeze / thaw cycles.
Shipping	Ice bag

Background

Lectin that binds beta-galactoside and a wide array of complex carbohydrates. Plays a role in regulating apoptosis, cell proliferation and cell differentiation. Inhibits CD45 protein phosphatase activity and therefore the dephosphorylation of Lyn kinase. Strong inducer of T-cell apoptosis.

For Research Use Only

Toll-free: 1-888-852-8623
Web: www.elabscience.com

Tel: 1-832-243-6086
Email: techsupport@elabscience.com

Fax: 1-832-243-6017

Rev. V1.0