

## Leptin/LEP Monoclonal Antibody

catalog number: **AN200097P**

**Note:** Centrifuge before opening to ensure complete recovery of vial contents.

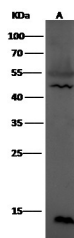
### Description

<b>Reactivity</b>	Human
<b>Immunogen</b>	Recombinant Human Leptin protein
<b>Host</b>	Mouse
<b>Isotype</b>	IgG1
<b>Clone</b>	A945
<b>Purification</b>	Protein A
<b>Buffer</b>	0.2 µm filtered solution in PBS

### Applications Recommended Dilution

<b>WB</b>	1:500-1:1000
-----------	--------------

### Data



Western Blot with Leptin / LEP Monoclonal Antibody at dilution of 1:500. Lane A: HepG2 Whole Cell Lysate, Lysates/proteins at 30 µg per lane.

**Observed-MW:14 kDa**

**Calculated-MW:16 kDa**

### Preparation & Storage

<b>Storage</b>	This antibody can be stored at 2°C-8°C for one month without detectable loss of activity. Antibody products are stable for twelve months from date of receipt when stored at -20°C to -80°C. Preservative-Free. Avoid repeated freeze-thaw cycles.
<b>Shipping</b>	Ice bag

### Background

Leptin is a protein product of the mouse obese gene. Mice with mutations in the obese gene that block the synthesis of Leptin have been found to be obese, diabetic and to have reduced activity, metabolism and body temperature. cDNA clones encoding Leptin have been isolated from human, simian, mouse and rat cells. Human Leptin shares approximately 84% sequence identity with the mouse protein. Human Leptin cDNA encodes a 167 amino acid residue protein with a 21 amino acid residue signal sequence that is cleaved to yield the 146 amino acid residue mature protein. The expression of Leptin mRNA has been shown to be restricted to adipose tissue.

### For Research Use Only