

# XDH Polyclonal Antibody

Catalog Number: E-AB-65997



**Note:** Centrifuge before opening to ensure complete recovery of vial contents.

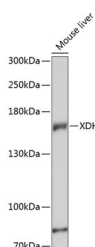
## Description

|                     |                                                        |
|---------------------|--------------------------------------------------------|
| <b>Reactivity</b>   | Mouse                                                  |
| <b>Immunogen</b>    | Recombinant fusion protein of human XDH (NP_000370.2). |
| <b>Host</b>         | Rabbit                                                 |
| <b>Isotype</b>      | IgG                                                    |
| <b>Purification</b> | Affinity purification                                  |
| <b>Conjugation</b>  | Unconjugated                                           |
| <b>Formulation</b>  | PBS with 0.02% sodium azide, 50% glycerol, pH7.3.      |

## Applications Recommended Dilution

|           |              |
|-----------|--------------|
| <b>WB</b> | 1:500-1:2000 |
|-----------|--------------|

## Data



Western blot analysis of extracts of Mouse liver using XDH Polyclonal Antibody at dilution of 1:3000.

**Observed MW:146kDa**

**Calculated Mw:146kDa**

## Preparation & Storage

**Storage** Store at -20°C. Avoid freeze / thaw cycles.

## Background

Xanthine dehydrogenase belongs to the group of molybdenum-containing hydroxylases involved in the oxidative metabolism of purines. The encoded protein has been identified as a moonlighting protein based on its ability to perform mechanistically distinct functions. Xanthine dehydrogenase can be converted to xanthine oxidase by reversible sulfhydryl oxidation or by irreversible proteolytic modification. Defects in xanthine dehydrogenase cause xanthinuria, may contribute to adult respiratory stress syndrome, and may potentiate influenza infection through an oxygen metabolite-dependent mechanism.

## For Research Use Only

A Reliable Research Partner in Life Science and Medicine

Toll-free: 1-888-852-8623

Web: [www.elabscience.com](http://www.elabscience.com)

Tel: 1-832-243-6086

Email: [techsupport@elabscience.com](mailto:techsupport@elabscience.com)

Fax: 1-832-243-6017