

RBM38 Polyclonal Antibody

catalog number: E-AB-16755

Note: Centrifuge before opening to ensure complete recovery of vial contents.

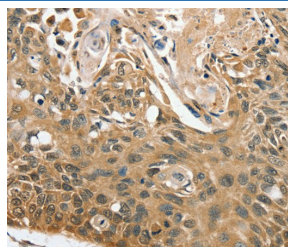
Description

Reactivity	Human;Mouse
Immunogen	Synthetic peptide of human RBM38
Host	Rabbit
Isotype	IgG
Purification	Affinity purification
Buffer	Phosphate buffered solution, pH 7.4, containing 0.05% stabilizer and 50% glycerol.

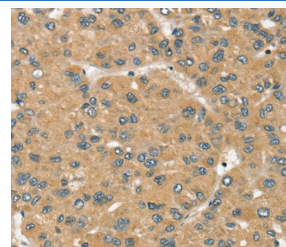
Applications

Applications	Recommended Dilution
IHC	1:50-1:300

Data



Immunohistochemistry of paraffin-embedded Human esophagus cancer tissue using RBM38 Polyclonal Antibody at dilution 1:45



Immunohistochemistry of paraffin-embedded Human liver cancer tissue using RBM38 Polyclonal Antibody at dilution 1:45

Preparation & Storage

Storage	Store at -20°C Valid for 12 months. Avoid freeze / thaw cycles.
Shipping	The product is shipped with ice pack, upon receipt, store it immediately at the temperature recommended.

Background

RBM38 is a cell cycle protein found in the cytosol and the nucleus that exists as two alternatively spliced isoforms, 1 (RNP1a) and 2 (RNP1b), of 239 and 121 amino acids, respectively. Independent of p53 expression, RBM38 isoform 1 induces cell cycle arrest in G1 phase through Human, Mouse maintaining transcript stability at the 3'-UTR of p21, a regulator of cell cycle progression at S phase. RBM38 is also an mRNA splicing factor that regulates the expression of FGFR2. RBM38 contains one RRM (RNA recognition motif) domain.

For Research Use Only