

# Recombinant Human BRCA2 Protein (His Tag)

Catalog Number:PDEH100043



**Note:** Centrifuge before opening to ensure complete recovery of vial contents.

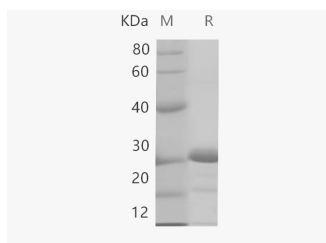
## Description

<b>Synonyms</b>	BRCA 2;BRCA1/BRCA2 containing complex subunit 2;Brca2;BRCA2;DNA repair associated;BRCA2;BRCC 2;BRCC2;Breast and ovarian cancer susceptibility gene early onset;breast and ovarian cancer susceptibility protein 2;Breast cancer 2 early onset;Breast Cancer 2 tumor suppressor;Breast cancer susceptibility protein BRCA2;Breast cancer type 2 susceptibility protein;BROVCA2;FACD;FAD 1;FAD;FAD1;FANCB;FANCD 1;FANCD;FANCD1;FANCD1 gene;Fanconi anemia complementation group D1;Fanconi anemia group D1 protein;GLM3;mutant BRCA2;OTTHUMP00000018803;OTTHUMP00000042401;PNCA2;XRCC11
<b>Species</b>	Human
<b>Expression Host</b>	E.coli
<b>Sequence</b>	Thr2350-Val2545
<b>Accession</b>	P51587-1
<b>Calculated Molecular Weight</b>	22.1 kDa
<b>Observed molecular weight</b>	25.4 kDa
<b>Tag</b>	N-His
<b>Bioactivity</b>	Immunogen(D-AB-10253L)

## Properties

<b>Purity</b>	> 85 % as determined by reducing SDS-PAGE.
<b>Endotoxin</b>	Please contact us for more information.
<b>Storage</b>	Generally, lyophilized proteins are stable for up to 12 months when stored at -20 to -80°C. Reconstituted protein solution can be stored at 4-8°C for 2-7 days. Aliquots of reconstituted samples are stable at < -20°C for 3 months.
<b>Shipping</b>	This product is provided as lyophilized powder which is shipped with ice packs.
<b>Formulation</b>	Lyophilized from sterile PBS, pH 7.4. Normally 5 % - 8 % trehalose, mannitol and 0.01% Tween80 are added as protectants before lyophilization. Please refer to the specific buffer information in the printed manual.
<b>Reconstitution</b>	Please refer to the printed manual for detailed information.

## Data



> 85 % as determined by reducing SDS-PAGE.

## For Research Use Only

A Reliable Research Partner in Life Science and Medicine

Toll-free: 1-888-852-8623

Web: [www.elabscience.com](http://www.elabscience.com)

Tel: 1-832-243-6086

Email: [techsupport@elabscience.com](mailto:techsupport@elabscience.com)

Fax: 1-832-243-6017

# Recombinant Human BRCA2 Protein (His Tag)

Catalog Number:PDEH100043



## Background

Inherited mutations in BRCA1 and this gene, BRCA2, confer increased lifetime risk of developing breast or ovarian cancer. Both BRCA1 and BRCA2 are involved in maintenance of genome stability, specifically the homologous recombination pathway for double-strand DNA repair. The BRCA2 protein contains several copies of a 70 aa motif called the BRC motif, and these motifs mediate binding to the RAD51 recombinase which functions in DNA repair. BRCA2 is considered a tumor suppressor gene, as tumors with BRCA2 mutations generally exhibit loss of heterozygosity (LOH) of the wild-type allele.

## For Research Use Only

A Reliable Research Partner in Life Science and Medicine

Toll-free: 1-888-852-8623

Web: [www.elabscience.com](http://www.elabscience.com)

Tel: 1-832-243-6086

Email: [techsupport@elabscience.com](mailto:techsupport@elabscience.com)

Fax: 1-832-243-6017