

## BCAT2 Polyclonal Antibody

catalog number: **E-AB-10996**

**Note:** Centrifuge before opening to ensure complete recovery of vial contents.

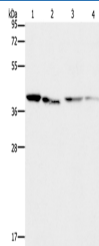
### Description

<b>Reactivity</b>	Human;Mouse;Rat
<b>Immunogen</b>	Recombinant protein of human BCAT2
<b>Host</b>	Rabbit
<b>Isotype</b>	IgG
<b>Purification</b>	Affinity purification
<b>Buffer</b>	Phosphate buffered solution, pH 7.4, containing 0.05% stabilizer and 50% glycerol.

### Applications

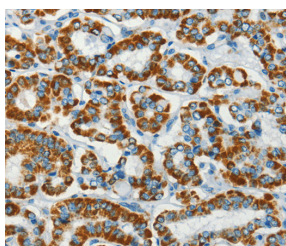
Applications	Recommended Dilution
<b>WB</b>	1:200-1:1000
<b>IHC</b>	1:100-1:300

### Data

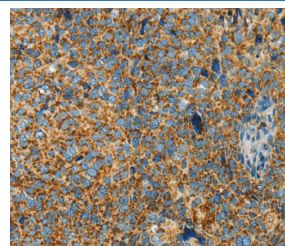


Western Blot analysis of Human placenta tissue and NIH/3T3 cell, Raji and hepG2 cell using BCAT2 Polyclonal Antibody at dilution of 1:312.5

**Calculated-MW:44 kDa**



Immunohistochemistry of paraffin-embedded Human thyroid cancer using BCAT2 Polyclonal Antibody at dilution of 1:70



Immunohistochemistry of paraffin-embedded Human cervical cancer using BCAT2 Polyclonal Antibody at dilution of 1:70

### Preparation & Storage

<b>Storage</b>	Store at -20°C Valid for 12 months. Avoid freeze / thaw cycles.
<b>Shipping</b>	The product is shipped with ice pack, upon receipt, store it immediately at the temperature recommended.

### Background

This gene encodes a branched chain aminotransferase found in mitochondria. The encoded protein forms a dimer that catalyzes the first step in the production of the branched chain amino acids leucine, isoleucine, and valine. Multiple transcript variants encoding different isoforms have been found for this gene.

### For Research Use Only