

## GPR171 Polyclonal Antibody

catalog number: **E-AB-13278**

**Note:** Centrifuge before opening to ensure complete recovery of vial contents.

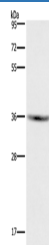
### Description

|                     |  |
|---------------------|--|
| <b>Reactivity</b>   | Human  |
| <b>Immunogen</b>    | Synthetic peptide of human GPR171  |
| <b>Host</b>         | Rabbit   |
| <b>Isotype</b>      | IgG  |
| <b>Purification</b> | Affinity purification  |
| <b>Buffer</b>       | Phosphate buffered solution, pH 7.4, containing 0.05% stabilizer and 50% glycerol. |

### Applications

| Applications | Recommended Dilution |
|--------------|----------------------|
| <b>WB</b>    | 1:500-1:2000         |

### Data



Western Blot analysis of HT-29 cell using GPR171  
Polyclonal Antibody at dilution of 1:400

**Calculated-MW:37 kDa**

### Preparation & Storage

|                 |  |
|-----------------|--|
| <b>Storage</b>  | Store at -20°C Valid for 12 months. Avoid freeze / thaw cycles.  |
| <b>Shipping</b> | The product is shipped with ice pack, upon receipt, store it immediately at the temperature recommended. |

### Background

Probable G-protein coupled receptor 171 (GPR171) is a protein that in humans is encoded by the GPR171 gene. One of the most abundant peptides in brain, LENSPPQAPARRLLPP (named BigLEN), which can activate GPR171. Additional studies showed that the BigLEN–GPR171 system plays an important role in regulating feeding and metabolism in mice. Thus, GPR171 is a potential target for developing antiobesity drugs.

### For Research Use Only