

Recombinant Human MASP1 Protein (His Tag)

Catalog Number: PKSH032735

Note: Centrifuge before opening to ensure complete recovery of vial contents.

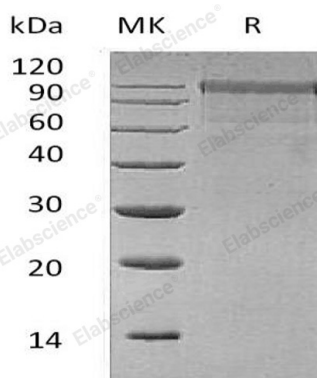
Description

| | |
|----------------------|---|
| Species | Human |
| Source | HEK293 Cells-derived Human MASP1 protein His20-Arg728, with an C-terminal His |
| Calculated MW | 80.7 kDa |
| Observed MW | 95-120 kDa |
| Accession | P48740-2 |
| Bio-activity | Not validated for activity |

Properties

| | |
|----------------------|---|
| Purity | > 95 % as determined by reducing SDS-PAGE. |
| Concentration | Subject to label value. |
| Endotoxin | < 1.0 EU per µg of the protein as determined by the LAL method. |
| Storage | Store at < -20°C, stable for 6 months. Please minimize freeze-thaw cycles. |
| Shipping | This product is provided as liquid. It is shipped at frozen temperature with blue ice/ gel packs. Upon receipt, store it immediately at < - 20°C. |
| Formulation | Supplied as a 0.2 µm filtered solution of 20mM Tris-HCl, 200mM NaCl, 10% Glycerol, pH 8.0. |

Data



> 95 % as determined by reducing SDS-PAGE.

Background

Mannan-Binding Lectin Serine Protease 1 (MASP-1) belongs to the peptidase S1 family. MASP1 contains two CUB domains, one EGF-like domain, one peptidase S1 domain and two Sushi (CCP/SCR) domains. MASP1 is primarily expressed in liver. MASP1 involved in the lectin pathway of the complement, performs a key role in innate immunity by recognizing pathogens through patterns of sugar moieties and neutralizing them. MASP1 is synthesized as a zymogen and activated when it complexes with the pathogen recognition molecules of lectin pathway, the mannose-binding lectin and the ficolins. MASP1 is not directly involved in complement activation but may act as an amplifier of complement activation by cleaving complement C2 or by activating another complement serine protease, MASP2. MASP1 is also able to cleave fibrinogen and factor XIII and may be involved in coagulation. MASP1 is inhibited by SERPING1 and A2M.

For Research Use Only

Toll-free: 1-888-852-8623
Web: www.elabscience.com

Tel: 1-832-243-6086
Email: techsupport@elabscience.com

Fax: 1-832-243-6017