

EPO Polyclonal Antibody

catalog number: D-AB-10439L

Note: Centrifuge before opening to ensure complete recovery of vial contents.

Description

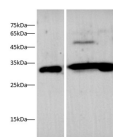
Reactivity	Human;Mouse;Rat
Immunogen	Recombinant Mouse EPO protein expressed by E.coli
Host	Rabbit
Isotype	IgG
Purification	Antigen Affinity Purification
Conjugation	Unconjugated
Buffer	PBS with 0.05% Proclin300, 1% protective protein and 50% glycerol, pH7.4

Applications

Recommended Dilution

WB	1:500-1:1000
IHC	1:600-1:1200

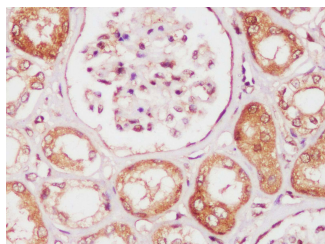
Data



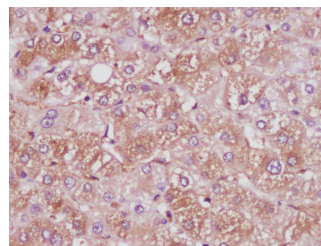
Western blot with EPO Polyclonal antibody at dilution of 1:1000. lane 1:U87-MG whole cell lysate, lane 2:Mouse kidney, lane 3:Rat liver

Observed-MW:37 kDa

Calculated-MW:21 kDa



Immunohistochemistry of paraffinembedded Human kidney using EPO Polyclonal Antibody at dilution of 1:1200



Immunohistochemistry of paraffinembedded Human liver using EPO Polyclonal Antibody at dilution of 1:1200

Preparation & Storage

Storage	Store at -20°C Valid for 12 months. Avoid freeze / thaw cycles.
Shipping	The product is shipped with ice pack, upon receipt, store it immediately at the temperature recommended.

Background

For Research Use Only

This gene is a member of the EPO/TPO family and encodes a secreted, glycosylated cytokine composed of four alpha helical bundles. The protein is found in the plasma and regulates red cell production by promoting erythroid differentiation and initiating hemoglobin synthesis. This protein also has neuroprotective activity against a variety of potential brain injuries and antiapoptotic functions in several tissue types.