

JPH1 Polyclonal Antibody

catalog number: E-AB-18143

Note: Centrifuge before opening to ensure complete recovery of vial contents.

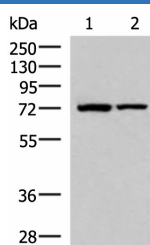
Description

Reactivity	Human;Mouse
Immunogen	Synthetic peptide of human JPH1
Host	Rabbit
Isotype	IgG
Purification	Antigen affinity purification
Conjugation	Unconjugated
buffer	Phosphate buffered solution, pH 7.4, containing 0.05% stabilizer and 50% glycerol.

Applications

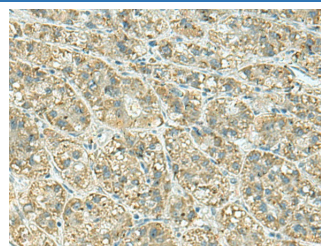
Applications	Recommended Dilution
WB	1:1000-1:5000
IHC	1:30-1:150

Data



Western blot analysis of Mouse heart tissue and Mouse skeletal muscle tissue lysates using JPH1 Polyclonal Antibody at dilution of 1:800

Observed-MV:Refer to figures
Calculated-MV:72 kDa



Immunohistochemistry of paraffin-embedded Human liver cancer tissue using JPH1 Polyclonal Antibody at dilution of 1:30(×200)

Preparation & Storage

Storage	Store at -20°C Valid for 12 months. Avoid freeze / thaw cycles.
Shipping	The product is shipped with ice pack, upon receipt, store it immediately at the temperature recommended.

Background

Junctional complexes between the plasma membrane and endoplasmic/sarcoplasmic reticulum are a common feature of all excitable cell types and mediate cross talk between cell surface and intracellular ion channels. The protein encoded by this gene is a component of junctional complexes and is composed of a C-terminal hydrophobic segment spanning the endoplasmic/sarcoplasmic reticulum membrane and a remaining cytoplasmic domain that shows specific affinity for the plasma membrane. This gene is a member of the junctophilin gene family.

For Research Use Only