

Note: Centrifuge before opening to ensure complete recovery of vial contents.

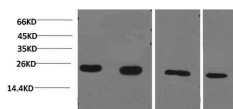
Description

Reactivity	Human, Mouse, Rat
Immunogen	Synthetic Peptide
Host	Mouse
Isotype	IgG
Clone	Clone: 4D7
Purification	Protein A purification
Conjugation	Unconjugated
Formulation	PBS with 0.02% sodium azide, 0.5% protective protein and 50% glycerol, pH7.4

Applications Recommended Dilution

WB	1:1000-2000
IHC	1:50-300
IF	1:50-300

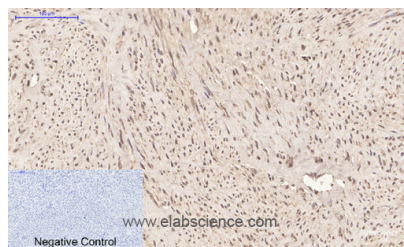
Data



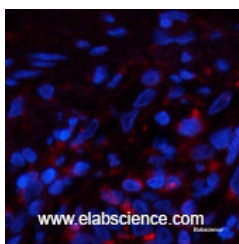
www.elabscience.com

Western Blot analysis of 1) Jurkat, 2) 293T, 3) Rat liver, 4) 3T3 using PPIB Monoclonal Antibody at dilution of 1:2000.

Observed Mw: 21kDa



Immunohistochemistry of paraffin-embedded Human uterus tissue using PPIB Monoclonal Antibody at dilution of 1:200.



Immunofluorescence analysis of Human lung tissue using PPIB Monoclonal Antibody at dilution of 1:200.

Preparation & Storage

Storage Store at -20°C. Avoid freeze / thaw cycles.

Background

For Research Use Only

A Reliable Research Partner in Life Science and Medicine

Toll-free: 1-888-852-8623

Web: www.elabscience.com

Tel: 1-832-243-6086

Email: techsupport@elabscience.com

Fax: 1-832-243-6017

PPIB Monoclonal Antibody

Catalog Number: E-AB-22123 1 Publications



The protein encoded by this gene is a cyclosporine-binding protein and is mainly located within the endoplasmic reticulum. It is associated with the secretory pathway and released in biological fluids. This protein can bind to cells derived from T- and B-lymphocytes, and may regulate cyclosporine A-mediated immunosuppression. Variants have been identified in this protein that give rise to recessive forms of osteogenesis imperfecta.

For Research Use Only

A Reliable Research Partner in Life Science and Medicine

Toll-free: 1-888-852-8623

Tel: 1-832-243-6086

Fax: 1-832-243-6017

Web: www.elabscience.com

Email: techsupport@elabscience.com