

Recombinant Glut1 Monoclonal Antibody

catalog number: **AN301125L**

Note: Centrifuge before opening to ensure complete recovery of vial contents.

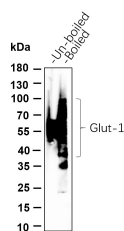
Description

Reactivity	Human;Mouse;Rat
Immunogen	Recombinant Human Glut1 protein
Host	Rabbit
Isotype	IgG, κ
Clone	B880
Purification	Protein A
Buffer	PBS, 50% glycerol, 0.05% Proclin 300, 0.05% protein protectant.

Applications Recommended Dilution

IHC	1:1000-1:5000
WB	1:10000-1:50000
IF	1:200-1:1000
ELISA	1:5000-1:20000

Data



Western Blot with Recombinant Glut1 Monoclonal Antibody
at dilution of 1:1000 dilution. Lane A: HepG2 lysate.

Observed-MW:50-300 kDa

Calculated-MW:54 kDa

Preparation & Storage

Storage	Store at -20°C Valid for 12 months. Avoid freeze / thaw cycles.
Shipping	Ice bag

Background

This gene encodes a major glucose transporter in the mammalian blood-brain barrier. The encoded protein is found primarily in the cell membrane and on the cell surface, where it can also function as a receptor for human T-cell leukemia virus (HTLV) I and II. Mutations in this gene have been found in a family with paroxysmal exertion-induced dyskinesia.

For Research Use Only