

LRRC7 Polyclonal Antibody

catalog number: E-AB-64461

Note: Centrifuge before opening to ensure complete recovery of vial contents.

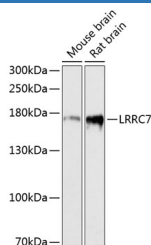
Description

Reactivity	Human;Mouse;Rat
Immunogen	Recombinant fusion protein of human LRRC7 (NP_065845.1).
Host	Rabbit
Isotype	IgG
Purification	Affinity purification
Buffer	Phosphate buffered solution, pH 7.4, containing 0.05% stabilizer and 50% glycerol.

Applications

Applications	Recommended Dilution
WB	1:500-1:2000
IF	1:50-1:200

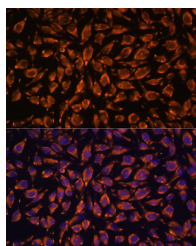
Data



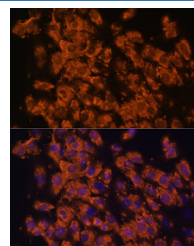
Western blot analysis of extracts of various cell lines using LRRC7 Polyclonal Antibody at dilution of 1:3000.

Observed-MV:172 kDa

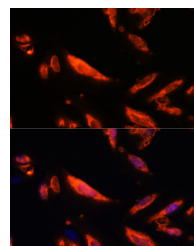
Calculated-MV:20 kDa/167 kDa/172 kDa



Immunofluorescence analysis of L929 cells using LRRC7 Polyclonal Antibody at dilution of 1:100. Blue: DAPI for nuclear staining.



Immunofluorescence analysis of C6 cells using LRRC7 Polyclonal Antibody at dilution of 1:100. Blue: DAPI for nuclear staining.



Immunofluorescence analysis of U-2 OS cells using LRRC7 Polyclonal Antibody at dilution of 1:100. Blue: DAPI for nuclear staining.

Preparation & Storage

Storage	Store at -20°C Valid for 12 months. Avoid freeze / thaw cycles.
Shipping	The product is shipped with ice pack, upon receipt, store it immediately at the temperature recommended.

Background

LRRC7 (Leucine Rich Repeat Containing 7) is a Protein Coding gene. Diseases associated with LRRC7 include Dental Pulp Necrosis and Chromosome 3Q29 Deletion Syndrome. Among its related pathways are Innate Immune System. An important paralog of this gene is ERBIN.

For Research Use Only