

## Recombinant Human GALK2 Protein (His Tag)

**Catalog Number:** PKSH032777

**Note:** Centrifuge before opening to ensure complete recovery of vial contents.

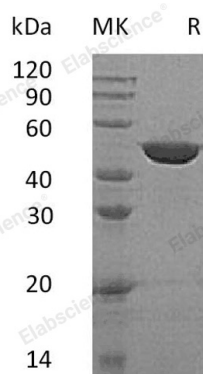
### Description

<b>Species</b>	Human
<b>Source</b>	HEK293 Cells-derived Human GALK2 protein Met 1-Ala458, with an C-terminal His
<b>Calculated MW</b>	51.4 kDa
<b>Observed MW</b>	47 kDa
<b>Accession</b>	Q01415
<b>Bio-activity</b>	Not validated for activity

### Properties

<b>Purity</b>	> 95 % as determined by reducing SDS-PAGE.
<b>Concentration</b>	Subject to label value.
<b>Endotoxin</b>	< 1.0 EU per µg of the protein as determined by the LAL method.
<b>Storage</b>	Store at < -20°C, stable for 6 months. Please minimize freeze-thaw cycles.
<b>Shipping</b>	This product is provided as liquid. It is shipped at frozen temperature with blue ice/gel packs. Upon receipt, store it immediately at < -20°C.
<b>Formulation</b>	Supplied as a 0.2 µm filtered solution of 25mM Tris-HCl, 100mM glycine, 10% glycerol, pH 7.3.

### Data



> 95 % as determined by reducing SDS-PAGE.

### Background

GALK2 acts as a galactokinase when galactose is present at high concentrations. GALK2 may be involved in a salvage pathway for the reutilization of free GalNAc derived from the degradation of complex carbohydrates. GALK2 has been reported to participate in pathways, such as Amino sugar and nucleotide sugar metabolism, Galactose metabolism and Metabolic pathways.

### For Research Use Only

Toll-free: 1-888-852-8623  
Web: [www.elabscience.com](http://www.elabscience.com)

Tel: 1-832-243-6086  
Email: [techsupport@elabscience.com](mailto:techsupport@elabscience.com)

Fax: 1-832-243-6017