

Recombinant beta actin Monoclonal Antibody

catalog number: **AN004840L**

Note: Centrifuge before opening to ensure complete recovery of vial contents.

Description

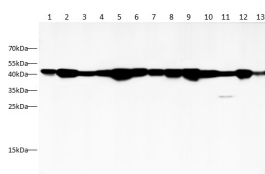
Reactivity	Human;Mouse;Rat
Immunogen	Synthetic peptide within N-terminal residues of β -Actin
Host	Rabbit
Isotype	IgG
Clone	SA30-01
Purification	Protein A/G Purification
Buffer	PBS with 0.05% Proclin300, 1% protective protein and 50% glycerol, pH7.4

Applications

Recommended Dilution

WB	1:5000-1:20000
IHC	1:500-1:1000
IF	1:500-1:1000

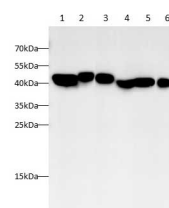
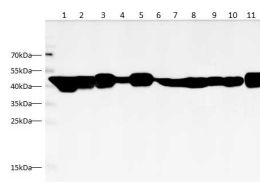
Data



Western blot with Recombinant beta actin Monoclonal Antibody at dilution of 1: 20000. Lane 1.A431 cell lysate, Lane 2.Caco-2 cell lysate, Lane 3.Jurkat cell lysate, Lane 4.K562 cell lysate, Lane 5.HeLa cell lysate, Lane 6.PC-3 cell lysate, Lane 7.Ramos cell lysate, Lane 8.TF-1 cell lysate, Lane 9.U20-S cell lysate, Lane 10.HL-60 cell lysate, Lane 11.HT-29 cell lysate, Lane 12.Raji cell lysate, Lane 13.HepG2 cell lysate

Observed-MW:43 kDa

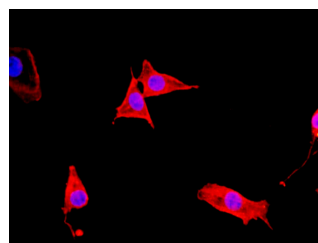
Calculated-MW:43 kDa



Western blot with Recombinant beta actin Monoclonal Antibody at dilution of 1: 20000. lane 1: Raw264.7 cell lysate, lane 2: C2C12 cell lysate, lane 3: mouse lung tissue lysate, lane 4: mouse pancreas tissue lysate, lane 5: mouse brain tissue lysate, lane 6: mouse breast tissue lysate

Observed-MW:43 kDa

Calculated-MW:43 kDa



For Research Use Only

Toll-free: 1-888-852-8623
Web: www.elabscience.com

Tel: 1-832-243-6086
Email: techsupport@elabscience.com

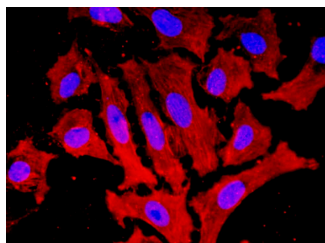
Fax: 1-832-243-6017

Rev. V1.5

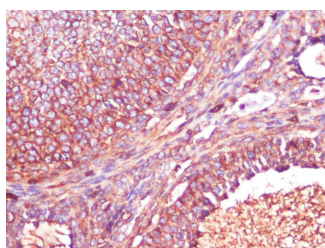
Western blot with Recombinant beta actin Monoclonal Antibody at dilution of 1: 20000. lane 1: C6 cell lysate, lane 2: PC-12 cell lysate, lane 3: rat spleen tissue lysate, lane 4: rat kidney tissue lysate, lane 5: rat lung tissue lysate, lane 6: rat pancreas tissue lysate, lane 7: rat brain tissue lysate, lane 8: rat stomach tissue lysate, lane 9: rat testis tissue lysate, lane 10: rat thymus tissue lysate, lane 11: rat breast tissue lysate

Observed-MW:43 kDa

Calculated-MW:43 kDa

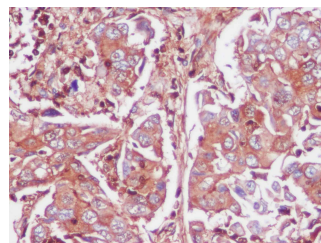


Immunofluorescence analysis of NIH/3T3 cells using Recombinant beta actin Monoclonal Antibody at dilution of 1:1000

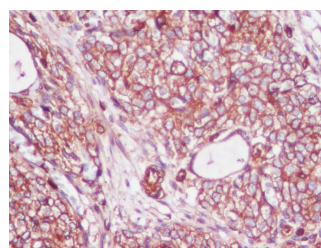


Immunohistochemistry of paraffin-embedded rat ovary using Recombinant beta actin Monoclonal Antibody at dilution of 1:1000.

Immunofluorescence analysis of U-2 OS cells using Recombinant beta actin Monoclonal Antibody at dilution of 1:1000



Immunohistochemistry of paraffin-embedded human lung cancer using Recombinant beta actin Monoclonal Antibody at dilution of 1:1000.



Immunohistochemistry of paraffin-embedded mouse ovary using Recombinant beta actin Monoclonal Antibody at dilution of 1:1000.

Preparation & Storage

Storage

Store at -20°C Valid for 12 months. Avoid freeze / thaw cycles.

Shipping

The product is shipped with ice pack, upon receipt, store it immediately at the temperature recommended.

Background

Beta-actin (ACTB/ACTB) is one of six different actin isoforms in humans. Actins are highly conserved proteins that are involved in cell motility, structure and integrity. Beta actin is a major constituent of the contractile apparatus and one of the two nonmuscle cytoskeletal actins. Beta-actin gene is stably and constitutively expressed at high levels in most tissues and cells, and commonly used as a loading control for western blot and as a control for qPCR.

For Research Use Only