

## Recombinant Human RPLP1 Protein (His, GST Tag)

**Catalog Number:** PDEH100992

**Note:** Centrifuge before opening to ensure complete recovery of vial contents.

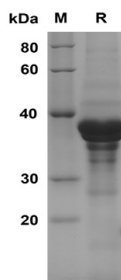
### Description

<b>Species</b>	Human
<b>Source</b>	E.coli-derived Human RPLP1 protein Met1-Asp114, with an N-terminal GST & C-terminal His
<b>Calculated MW</b>	37.4 kDa
<b>Observed MW</b>	38 kDa
<b>Accession</b>	P05386
<b>Bio-activity</b>	Not validated for activity

### Properties

<b>Purity</b>	> 90% as determined by reducing SDS-PAGE.
<b>Endotoxin</b>	< 10 EU/mg of the protein as determined by the LAL method
<b>Storage</b>	Generally, lyophilized proteins are stable for up to 12 months when stored at -20 to -80°C. Reconstituted protein solution can be stored at 4-8°C for 2-7 days. Aliquots of reconstituted samples are stable at < -20°C for 3 months.
<b>Shipping</b>	This product is provided as lyophilized powder which is shipped with ice packs.
<b>Formulation</b>	Lyophilized from a 0.2 µm filtered solution in PBS with 5% Trehalose and 5% Mannitol.
<b>Reconstitution</b>	It is recommended that sterile water be added to the vial to prepare a stock solution of 0.5 mg/mL. Concentration is measured by UV-Vis.

### Data



SDS-PAGE analysis of Human RPLP1 proteins, 2 µg/lane of Recombinant Human RPLP1 proteins was resolved with SDS-PAGE under reducing conditions, showing bands at 38 kDa.

### Background

RPLP1 (ribosomal protein large P1) is part of the 60S ribosomal subunit and functions in regulating elongation translation factors, and its expression is regulated by the estrogen target gene, c-Myc. RPLP1 has two alternatively spliced transcript variants that encode different proteins, with variant 1 coding for a protein of ~12-kDa molecular weight and variant 2 coding for an ~8.4-kDa protein, and the variant 1-transcribed protein appears as the major isoform. RPLP1 is proposed to play a role in diseases associated with cell proliferation and cell survival.

### For Research Use Only

Toll-free: 1-888-852-8623  
Web: [www.elabscience.com](http://www.elabscience.com)

Tel: 1-832-243-6086  
Email: [techsupport@elabscience.com](mailto:techsupport@elabscience.com)

Fax: 1-832-243-6017