

mCherry-Tag Polyclonal Antibody

catalog number: E-AB-40508

Note: Centrifuge before opening to ensure complete recovery of vial contents.

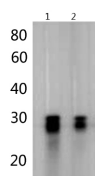
Description

Reactivity	All
Immunogen	Recombinant Discosoma sp. mCherry Protein
Host	Rabbit
Isotype	IgG
Purification	Antigen Affinity Purification
Conjugation	Unconjugated
buffer	PBS with 0.05% proclin 300, 1% protective protein and 50% glycerol,pH7.4

Applications

WB	1:1000-2000
-----------	-------------

Data



Western blotting of mCherry transfected HEK293 cell with Anti-mcherry polyclonal antibody at dilution of 1:2000. Lane 1: 10ul cell lysate, Lane 2: 5ul cell lysates.

Observed-MV:30 kDa

Calculated-MV:30 kDa

Preparation & Storage

Storage	Store at -20°C Valid for 12 months. Avoid freeze / thaw cycles.
Shipping	The product is shipped with ice pack,upon receipt,store it immediately at the temperature recommended.

Background

mCherry is a member of the mFruits family of monomeric red fluorescent proteins (mRFPs). As a RFP, mCherry was derived from DsRed of Discosoma sea anemones unlike green fluorescent proteins (GFPs) which are often derived from Aequoera victoria jellyfish.

For Research Use Only