

EFHD1 Monoclonal Antibody

catalog number: E-AB-22043

Note: Centrifuge before opening to ensure complete recovery of vial contents.

Description

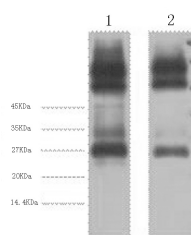
Reactivity	Human;Mouse;Rat
Immunogen	Synthetic Peptide
Host	Mouse
Isotype	IgG
Clone	5K1
Purification	Protein A purification
Conjugation	Unconjugated
buffer	Phosphate buffered solution, pH 7.4, containing 0.05% stabilizer, 0.5% protein protectant and 50% glycerol.

Applications

Recommended Dilution

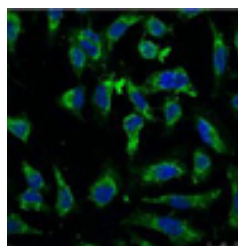
WB	1:500-1:3000
IHC	1:50-1:300
IF	1:100-1:200

Data

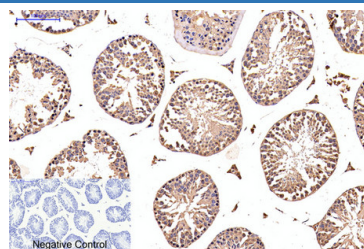


Western Blot analysis of 1) Mouse spleen 2) Rat spleen using EFHD1 Monoclonal Antibody at dilution of 1:3000.

Observed-MV:27 kDa



Immunofluorescence analysis of HeLa tissue using EFHD1 Monoclonal Antibody at dilution of 1:100.



Immunohistochemistry of paraffin-embedded Mouse testis tissue using EFHD1 Monoclonal Antibody at dilution of 1:200.

Preparation & Storage

Storage	Store at -20°C Valid for 12 months. Avoid freeze / thaw cycles.
Shipping	The product is shipped with ice pack, upon receipt, store it immediately at the temperature recommended.

Background

For Research Use Only

EFHD1 Monoclonal Antibody

catalog number: E-AB-22043



This gene encodes a member of the EF-hand super family of calcium binding proteins, which are involved in a variety of cellular processes including mitosis, synaptic transmission, and cytoskeletal rearrangement. The protein encoded by this gene is composed of an N-terminal disordered region, proline-rich elements, two EF-hands, and a C-terminal coiled-coil domain. This protein has been shown to associate with the mitochondrial inner membrane, and in HeLa cells, acts as a novel mitochondrial calcium ion sensor for mitochondrial flash activation. Alternative splicing results in multiple transcript variants. EFHD1 (EF-Hand Domain Family Member D1) is a Protein Coding gene. GO annotations related to this gene include calcium ion binding. An important paralog of this gene is EFHD2.

For Research Use Only

A Reliable Research Partner in Life Science and Medicine
Tel: 400-999-2100

Email: techsupport@elabscience.cn

Web: www.elabscience.cn

Rev. V1.7