

## Elab Fluor® 647 Goat Anti-Rat IgG (H+L) Antibody[Poly1441]

**Catalog Number:** AN00339M

**Note:** Centrifuge before opening to ensure complete recovery of vial contents.

### Description

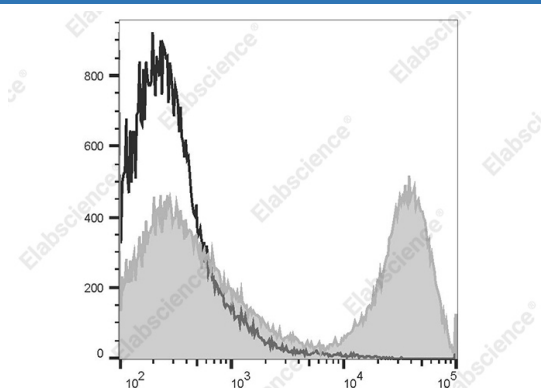
<b>Reactivity</b>	Rat
<b>Host</b>	Goat
<b>Isotype</b>	Goat Polyclonal IgG
<b>Clone No.</b>	Poly1441
<b>Conjugation</b>	Elab Fluor® 647
<b>Conjugation Information</b>	Elab Fluor® 647 is designed to be excited by the Red laser (627-640 nm) and detected using an optical filter centered near 670 nm (e.g., a 660/20 nm bandpass filter).
<b>Storage Buffer</b>	Phosphate buffered solution, pH 7.2, containing 0.09% stabilizer and 1% protein protectant.

### Applications

### Recommended usage

<b>FCM</b>	Each lot of this antibody is quality control tested by flow cytometric analysis. <b>The amount of the reagent is suggested to be used 5 µL of antibody per test (million cells in 100 µL staining volume or per 100 µL of whole blood).</b> Please check your vial before the experiment. Since applications vary, the appropriate dilutions must be determined for individual use.
------------	---

### Data



Staining of C57BL/6 murine splenocytes cells with purified mouse anti-mouse CD3, followed by Elab Fluor® 647 Goat Anti-Rat IgG (H+L) Antibody[Poly1441](filled gray histogram). Cells in the lymphocytes gate were used for analysis.

### Preparation & Storage

<b>Storage</b>	Keep as concentrated solution. This product can be stored at 2-8°C for 12 months. Please protected from prolonged exposure to light and do not freeze.
<b>Shipping</b>	Ice bag

### Antigen Information

<b>Alternate Names</b>	Goat Anti-Rat IgG
<b>Uniprot ID</b>	A6K367
<b>Gene ID</b>	295279

### For Research Use Only

Toll-free: 1-888-852-8623  
Web: [www.elabscience.com](http://www.elabscience.com)

Tel: 1-832-243-6086  
Email: [techsupport@elabscience.com](mailto:techsupport@elabscience.com)

Fax: 1-832-243-6017

Rev. V1.8

**Background**

Goat anti-rat IgG antibody reacts primarily with the heavy chains of rat IgG, but also partially binds to the light chains common to most rat immunoglobulins. No cross-reactivity has been detected against non-immunoglobulin serum proteins. This antibody has been solid-phase absorbed to ensure minimal cross-reaction with rabbit, human, bovine, horse, and mouse immunoglobulins, but it may cross-react with other immunoglobulins from other species.