

## Elab Fluor® 594-conjugated GAPDH Monoclonal Antibody

catalog number: AN00296Y

**Note:** Centrifuge before opening to ensure complete recovery of vial contents.

### Description

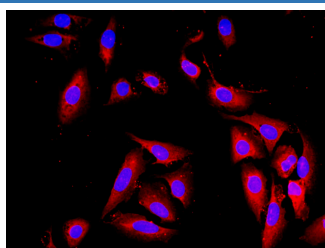
<b>Reactivity</b>	Human;Mouse;Rat
<b>Immunogen</b>	Recombinant human GAPDH protein expressed by E.coli
<b>Host</b>	Mouse
<b>Isotype</b>	IgM
<b>Clone</b>	7B8
<b>Purification</b>	Protein A/G Purification
<b>Conjugation</b>	Elab Fluor® 594(Ex/Em:591nm/614nm)
<b>Buffer</b>	PBS with 0.05% Proclin300, 1% protective protein and 50% glycerol, pH7.4

### Applications

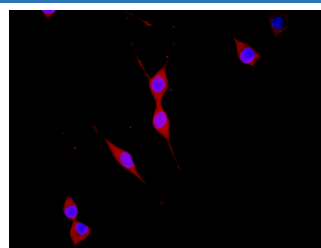
### Recommended Dilution

<b>IF</b>	1:100-1:200
-----------	-------------

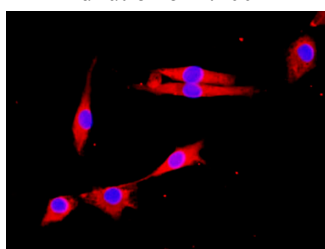
### Data



Immunofluorescence analysis of U-2 OS cells using Elab Fluor® 594-conjugated GAPDH Monoclonal Antibody at dilution of 1:100



Immunofluorescence analysis of NIH/3T3 cells using Elab Fluor® 594-conjugated GAPDH Monoclonal Antibody at dilution of 1:100



Immunofluorescence analysis of C6 cells using Elab Fluor® 594-conjugated GAPDH Monoclonal Antibody at dilution of 1:100

### Preparation & Storage

<b>Storage</b>	Store at -20°C Valid for 12 months. Avoid freeze / thaw cycles. Protected from prolonged exposure to light.
<b>Shipping</b>	The product is shipped with ice pack, upon receipt, store it immediately at the temperature recommended.

### Background

GAPDH is an enzyme of 37kDa that catalyzes the sixth step of glycolysis and thus serves to break down glucose for energy and carbon molecules. Because the GAPDH gene is often stably and constitutively expressed at high levels in most tissues and cells, it is commonly used as a loading control for western blot and as a control for qPCR.

### For Research Use Only