

beta actin Polyclonal Antibody

catalog number: AN007030L

Note: Centrifuge before opening to ensure complete recovery of vial contents.

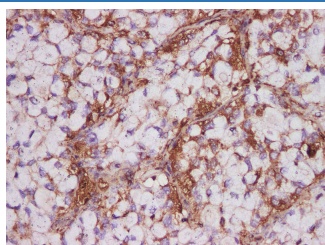
Description

Reactivity	Human
Immunogen	Recombinant Human beta actin protein expressed by E.coli
Host	Rabbit
Isotype	IgG
Purification	Antigen Affinity Purification
Buffer	PBS with 0.05% Proclin300, 1% protective protein and 50% glycerol, pH7.4

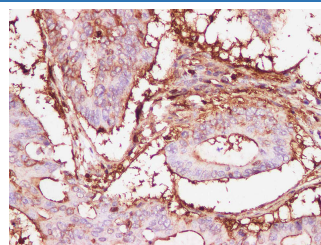
Applications Recommended Dilution

IHC	1:300-1:600
------------	-------------

Data



Immunohistochemistry of paraffin-embedded Human lung cancer using beta actin Polyclonal Antibody at dilution of 1:550.



Immunohistochemistry of paraffin-embedded Human colon carcinoma using beta actin Polyclonal Antibody at dilution of 1:550.

Preparation & Storage

Storage	Store at -20°C Valid for 12 months. Avoid freeze / thaw cycles.
Shipping	The product is shipped with ice pack, upon receipt, store it immediately at the temperature recommended.

Background

Beta-actin (ACTB/ACTB) is one of six different actin isoforms in humans. Actins are highly conserved proteins that are involved in cell motility, structure and integrity. Beta actin is a major constituent of the contractile apparatus and one of the two nonmuscle cytoskeletal actins. Beta-actin gene is stably and constitutively expressed at high levels in most tissues and cells, and commonly used as a loading control for western blot and as a control for qPCR.

For Research Use Only