

## Recombinant Rat Serpin A6/CBG protein (His Tag)

**Catalog Number:** PDMR100089

**Note:** Centrifuge before opening to ensure complete recovery of vial contents.

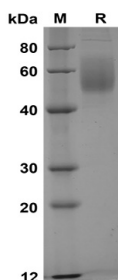
### Description

<b>Species</b>	Rat
<b>Source</b>	HEK293 Cells-derived Rat Serpin A6 protein Met1-Ala396, with an C-terminal His
<b>Calculated MW</b>	43.5 kDa
<b>Observed MW</b>	50-70 kDa
<b>Accession</b>	P31211
<b>Bio-activity</b>	Not validated for activity

### Properties

<b>Purity</b>	> 90% as determined by reducing SDS-PAGE.
<b>Endotoxin</b>	< 1.0 EU/mg of the protein as determined by the LAL method
<b>Storage</b>	Generally, lyophilized proteins are stable for up to 12 months when stored at -20 to -80 °C. Reconstituted protein solution can be stored at 4-8°C for 2-7 days. Aliquots of reconstituted samples are stable at < -20°C for 3 months.
<b>Shipping</b>	This product is provided as lyophilized powder which is shipped with ice packs.
<b>Formulation</b>	Lyophilized from a 0.2 µm filtered solution in PBS with 5% Trehalose and 5% Mannitol.
<b>Reconstitution</b>	It is recommended that sterile water be added to the vial to prepare a stock solution of 0.5 mg/mL. Concentration is measured by UV-Vis.

### Data



SDS-PAGE analysis of Rat Serpin A6/CBG proteins,  
2µg/lane of Recombinant Rat Serpin A6/CBG proteins was  
resolved with SDS-PAGE under reducing conditions,  
showing bands at 50-70 KD.

### Background

### For Research Use Only

Toll-free: 1-888-852-8623  
Web: [www.elabscience.com](http://www.elabscience.com)

Tel: 1-832-243-6086  
Email: [techsupport@elabscience.com](mailto:techsupport@elabscience.com)

Fax: 1-832-243-6017

Rev. V1.5

Corticosteroid-binding globulin (CBG), also known as SerpinA6, is a non-inhibitory member of the serine proteinase inhibitor (serpin) superfamily. It is the high-affinity transport protein for glucocorticoids in vertebrate blood. CBG is specifically cleaved by this protease at a precise site close to its carboxy-terminus. This induces a conformation change and disrupts the binding between glucocorticoids and CBG, and promotes a significant and local release of glucocorticoids (over 90% of them are bound to CBG in human plasma). In this context, CBG directs glucocorticoids to sites of inflammation, and plays in consequence a crucial role in efficient glucocorticoid action in physiology. The SerpinA6 protein is mainly secreted by the liver. This negative acute phase protein regulates free cortisol levels in the blood and distributes cortisol to its target tissues. SerpinA6 deficiency is an extremely rare hereditary disorder characterized by reduced corticosteroid-binding capacity with normal or low plasma corticosteroid-binding globulin concentration, and normal or low basal cortisol levels associated with hypo-/hypertension and muscle fatigue. There are three heritable, human CBG gene mutations that can reduce CBG-cortisol binding affinity and/or reduce circulating CBG levels.