

# Fth1 Polyclonal Antibody

catalog number: D-AB-10200L

**Note:** Centrifuge before opening to ensure complete recovery of vial contents.

## Description

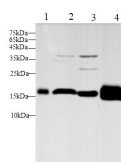
<b>Reactivity</b>	Mouse;Rat
<b>Immunogen</b>	Recombinant Mouse Fth1 protein expressed by E.coli
<b>Host</b>	Rabbit
<b>Isotype</b>	IgG
<b>Purification</b>	Antigen Affinity Purification
<b>Conjugation</b>	Unconjugated
<b>buffer</b>	PBS with 0.05% proclin 300, 1% protective protein and 50% glycerol,pH7.4

## Applications

## Recommended Dilution

<b>WB</b>	1:500-1:1000
-----------	--------------

## Data



Western blot with Fth1 Polyclonal antibody at dilution of 1:500.lane 1:RAW264.7 whole cell lysate,lane 2:Mouse brain,lane 3:Mouse liver,lane 4:C6 whole cell lysate

**Observed-MV:21 kDa**

**Calculated-MV:21 kDa**

## Preparation & Storage

<b>Storage</b>	Store at -20°C Valid for 12 months. Avoid freeze / thaw cycles.
<b>Shipping</b>	The product is shipped with ice pack,upon receipt,store it immediately at the temperature recommended.

## Background

Stores iron in a soluble,non-toxic,readily available form(By similarity).Important for iron homeostasis(By similarity).Has ferroxidase activity(By similarity).Iron is taken up in the ferrous form and deposited as ferric hydroxides after oxidation(By similarity).Also plays a role in delivery of iron to cells. Mediates iron uptake in capsule cells of the developing kidney

## For Research Use Only