

NFATC2 Polyclonal Antibody

Catalog Number:E-AB-60842



Note: Centrifuge before opening to ensure complete recovery of vial contents.

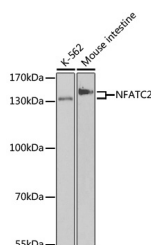
Description

| | |
|---------------------|---|
| Reactivity | Human,Mouse,Rat |
| Immunogen | A synthetic peptide of human NFATC2 |
| Host | Rabbit |
| Isotype | IgG |
| Purification | Affinity purification |
| Conjugation | Unconjugated |
| Formulation | PBS with 0.02% sodium azide, 50% glycerol, pH7.3. |

Applications Recommended Dilution

| | |
|-----------|--------------|
| WB | 1:500-1:1000 |
|-----------|--------------|

Data



Western blot analysis of extracts of various cell lines using NFATC2 Polyclonal Antibody at dilution of 1:500.

Observed MW:130kDa

Calculated

Mw:76kDa/97kDa/98kDa/99kDa/100kDa

Preparation & Storage

Storage Store at -20°C. Avoid freeze / thaw cycles.

Background

This gene is a member of the nuclear factor of activated T cells (NFAT) family. The product of this gene is a DNA-binding protein with a REL-homology region (RHR) and an NFAT-homology region (NHR). This protein is present in the cytosol and only translocates to the nucleus upon T cell receptor (TCR) stimulation, where it becomes a member of the nuclear factors of activated T cells transcription complex. This complex plays a central role in inducing gene transcription during the immune response. Alternate transcriptional splice variants encoding different isoforms have been characterized.

For Research Use Only

A Reliable Research Partner in Life Science and Medicine

Toll-free: 1-888-852-8623

Web: www.elabscience.com

Tel: 1-832-243-6086

Email: techsupport@elabscience.com

Fax: 1-832-243-6017