

# Recombinant Human IL-1A/IL-1 $\beta$ Protein

Catalog Number:PKSH033458



**Note:** Centrifuge before opening to ensure complete recovery of vial contents.

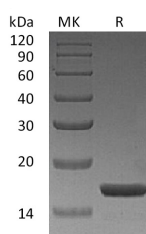
## Description

<b>Synonyms</b>	Interleukin-1 Alpha;IL-1 Alpha;Hematopoietin-1;IL1A;IL1F1
<b>Species</b>	Human
<b>Expression Host</b>	E.coli
<b>Sequence</b>	Ser113-Ala271
<b>Accession</b>	P01583
<b>Calculated Molecular Weight</b>	19 kDa
<b>Observed molecular weight</b>	17 kDa
<b>Tag</b>	C-His

## Properties

<b>Purity</b>	> 98 % as determined by reducing SDS-PAGE.
<b>Endotoxin</b>	< 0.1 EU per $\mu$ g of the protein as determined by the LAL method.
<b>Storage</b>	Generally, lyophilized proteins are stable for up to 12 months when stored at -20 to -80°C. Reconstituted protein solution can be stored at 4-8°C for 2-7 days. Aliquots of reconstituted samples are stable at < -20°C for 3 months.
<b>Shipping</b>	This product is provided as lyophilized powder which is shipped with ice packs.
<b>Formulation</b>	Lyophilized from sterile PBS,pH 8.0. Normally 5 % - 8 % trehalose, mannitol and 0.01 % Tween80 are added as protectants before lyophilization. Please refer to the specific buffer information in the printed manual.
<b>Reconstitution</b>	Please refer to the printed manual for detailed information.

## Data



> 98 % as determined by reducing SDS-PAGE.

## Background

Interleukin-1 alpha (IL1 $\alpha$ ) is a cytokine member of the interleukin-1 family. IL-1 consists of two distinct forms: IL1 $\alpha$  and IL1 $\beta$  that recognize the same cell surface receptors but are distinct proteins with approximately 25% amino acid sequence identity. IL1 $\alpha$  is constitutively produced by epithelial cells and plays an essential role in maintenance of skin barrier function. Upon stimulation, a wide variety of cells including osteoblasts, monocytes, macrophages can be induced to express IL1 $\alpha$ . IL1 $\alpha$  possesses a wide range of metabolic, physiological, haematopoietic activities, and is critically involved in the regulation of the immune responses and inflammatory responses.

## For Research Use Only

A Reliable Research Partner in Life Science and Medicine

Toll-free: 1-888-852-8623

Web: [www.elabscience.com](http://www.elabscience.com)

Tel: 1-832-243-6086

Email: [techsupport@elabscience.com](mailto:techsupport@elabscience.com)

Fax: 1-832-243-6017