

## Recombinant Phospho-FOXO3A (Ser253) Monoclonal Antibody

catalog number: **AN301011L**

**Note:** Centrifuge before opening to ensure complete recovery of vial contents.

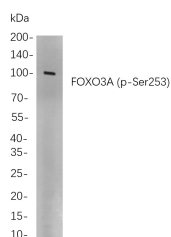
### Description

<b>Reactivity</b>	Human;Mouse;Rat
<b>Immunogen</b>	A synthetic peptide corresponding to residues around (Ser253) of Human Phospho-FOXO3A
<b>Host</b>	Rabbit
<b>Isotype</b>	IgG, $\kappa$
<b>Clone</b>	B762
<b>Purification</b>	Protein A
<b>Buffer</b>	PBS, 50% glycerol, 0.05% Proclin 300, 0.05% protein protectant.

### Applications

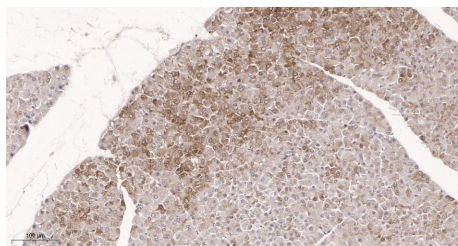
Applications	Recommended Dilution
IHC	1:200-1:1000
WB	1:1000-1:5000
IF	1:200-1:1000
ELISA	1:5000-1:20000

### Data

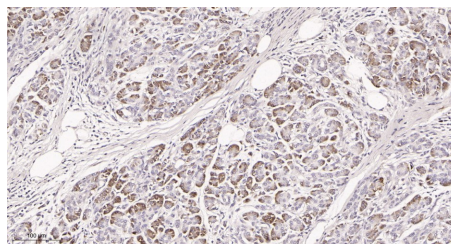


Western Blot with Recombinant Phospho-FOXO3A (Ser253) Monoclonal Antibody at dilution of 1:1000 dilution. Lane A: HEK293 cells.

**Observed-MW:97 kDa**  
**Calculated-MW:71 kDa**



Immunohistochemistry of paraffin-embedded mouse pancreas tissue using Recombinant Phospho-FOXO3A (Ser253) Monoclonal Antibody at dilution of 1:200.



Immunohistochemistry of paraffin-embedded human pancreas tissue using Recombinant Phospho-FOXO3A (Ser253) Monoclonal Antibody at dilution of 1:200.

### Preparation & Storage

<b>Storage</b>	Store at -20°C Valid for 12 months. Avoid freeze / thaw cycles.
<b>Shipping</b>	Ice bag

### Background

#### For Research Use Only

Toll-free: 1-888-852-8623  
Web: [www.elabscience.com](http://www.elabscience.com)

Tel: 1-832-243-6086  
Email: [techsupport@elabscience.com](mailto:techsupport@elabscience.com)

Fax: 1-832-243-6017

Rev. V1.2

This gene belongs to the forkhead family of transcription factors which are characterized by a distinct forkhead domain. This gene likely functions as a trigger for apoptosis through expression of genes necessary for cell death. Translocation of this gene with the MLL gene is associated with secondary acute leukemia. Alternatively spliced transcript variants encoding the same protein have been observed.