

GOLGA2 Polyclonal Antibody

catalog number: E-AB-15081

Note: Centrifuge before opening to ensure complete recovery of vial contents.

Description

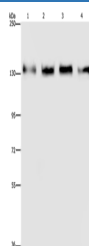
Reactivity	Human
Immunogen	Recombinant protein of human GOLGA2
Host	Rabbit
Isotype	IgG
Purification	Affinity purification
Conjugation	Unconjugated
Buffer	Phosphate buffered solution, pH 7.4, containing 0.05% stabilizer and 50% glycerol.

Applications

Recommended Dilution

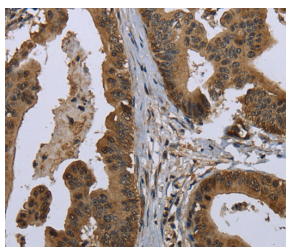
WB	1:500-1:2000
IHC	1:100-1:300

Data



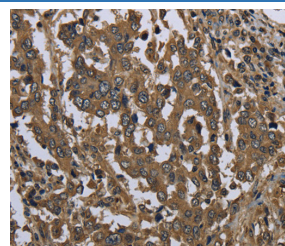
Western Blot analysis of 293T, Hela, A172 and A549 cell using GOLGA2 Polyclonal Antibody at dilution of 1:300

Calculated-MW:113 kDa



Immunohistochemistry of paraffin-embedded Human gastric cancer using GOLGA2 Polyclonal Antibody at dilution of

1:60



Immunohistochemistry of paraffin-embedded Human liver cancer using GOLGA2 Polyclonal Antibody at dilution of

1:60

Preparation & Storage

Storage	Store at -20°C Valid for 12 months. Avoid freeze / thaw cycles.
Shipping	The product is shipped with ice pack, upon receipt, store it immediately at the temperature recommended.

Background

For Research Use Only

The Golgi apparatus, which participates in glycosylation and transport of proteins and lipids in the secretory pathway, consists of a series of stacked cisternae (flattened membrane sacs). Interactions between the Golgi and microtubules are thought to be important for the reorganization of the Golgi after it fragments during mitosis. This gene encodes one of the golgins, a family of proteins localized to the Golgi. This encoded protein has been postulated to play roles in the stacking of Golgi cisternae and in vesicular transport. Several alternatively spliced transcript variants of this gene have been described, but the full-length nature of these variants has not been determined.