

TBL1X Polyclonal Antibody

catalog number: E-AB-17052

Note: Centrifuge before opening to ensure complete recovery of vial contents.

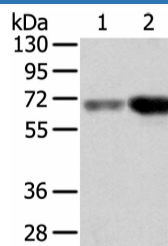
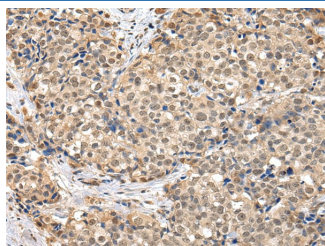
Description

Reactivity	Human;Mouse
Immunogen	Fusion protein of human TBL1X
Host	Rabbit
Isotype	IgG
Purification	Affinity purification
Buffer	Phosphate buffered solution, pH 7.4, containing 0.05% stabilizer and 50% glycerol.

Applications Recommended Dilution

WB	1:500-2000
IHC	1:25-100

Data



Immunohistochemistry of paraffin-embedded Human breast cancer using TBL1X Polyclonal Antibody at dilution of 1/30 tissue using TBL1X Polyclonal Antibody at dilution of 1/500

Calculated-MW:62 kDa

Preparation & Storage

Storage	Store at -20°C Valid for 12 months. Avoid freeze / thaw cycles.
Shipping	The product is shipped with ice pack, upon receipt, store it immediately at the temperature recommended.

Background

The protein encoded by this gene has sequence similarity with Human, Mouse members of the WD40 repeat-containing protein family. The WD40 group is a large family of proteins, which appear to have a regulatory function. It is believed that the WD40 repeats mediate protein-protein interactions and members of the family are involved in signal transduction, RNA processing, gene regulation, vesicular trafficking, cytoskeletal assembly and may play a role in the control of cytotypic differentiation.

For Research Use Only