

KBTD11 Polyclonal Antibody

catalog number: E-AB-18161

Note: Centrifuge before opening to ensure complete recovery of vial contents.

Description

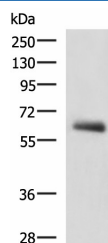
Reactivity	Human;Mouse
Immunogen	Synthetic peptide of human KBTD11
Host	Rabbit
Isotype	IgG
Purification	Antigen affinity purification
Conjugation	Unconjugated
Buffer	Phosphate buffered solution, pH 7.4, containing 0.05% stabilizer and 50% glycerol.

Applications

Recommended Dilution

WB	1:1000-1:5000
----	---------------

Data



Western blot analysis of Human metastatic papillary carcinoma(thyroid cancer) tissue lysate using KBTD11

Polyclonal Antibody at dilution of 1:2300

Observed-MW:Refer to figures

Calculated-MW:66 kDa

Preparation & Storage

Storage	Store at -20°C Valid for 12 months. Avoid freeze / thaw cycles.
Shipping	The product is shipped with ice pack,upon receipt,store it immediately at the temperature recommended.

Background

The function of this protein remains unknown.