

CD272 Polyclonal Antibody

catalog number: E-AB-14847

Note: Centrifuge before opening to ensure complete recovery of vial contents.

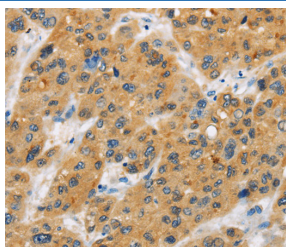
Description

Reactivity	Human
Immunogen	Recombinant protein of human BTLA
Host	Rabbit
Isotype	IgG
Purification	Affinity purification
Buffer	Phosphate buffered solution, pH 7.4, containing 0.05% stabilizer and 50% glycerol.

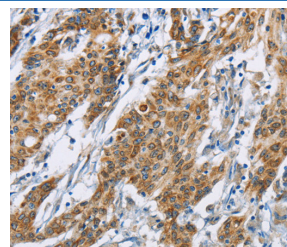
Applications Recommended Dilution

IHC	1:25-1:100
------------	------------

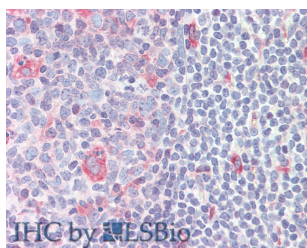
Data



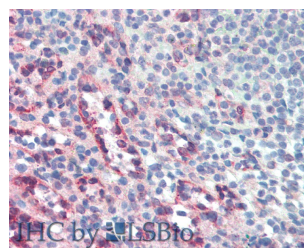
Immunohistochemistry of paraffin-embedded Human liver cancer tissue using CD272 Polyclonal Antibody at dilution 1:30



Immunohistochemistry of paraffin-embedded Human gastric cancer tissue using CD272 Polyclonal Antibody at dilution 1:30



Immunohistochemistry of paraffin-embedded Small Intestine (MALT) tissue using CD272 Polyclonal Antibody at dilution of 1:50 (Elabscience Product Detected by Lifespan).



Immunohistochemistry of paraffin-embedded Small Intestine (MALT) tissue using CD272 Polyclonal Antibody at dilution of 1:50 (Elabscience Product Detected by Lifespan).

Preparation & Storage

Storage	Store at -20°C Valid for 12 months. Avoid freeze / thaw cycles.
Shipping	The product is shipped with ice pack, upon receipt, store it immediately at the temperature recommended.

Background

This gene encodes a member of the immunoglobulin superfamily. The encoded protein contains a single immunoglobulin (Ig) domain and is a receptor that relays inhibitory signals to suppress the immune response. Alternative splicing results in multiple transcript variants. Polymorphisms in this gene have been associated with an increased risk of rheumatoid arthritis.

For Research Use Only