

Recombinant Human ANGPTL8/ β -trophin Protein (Fc Tag)

Catalog Number: PKSH032067



Note: Centrifuge before opening to ensure complete recovery of vial contents.

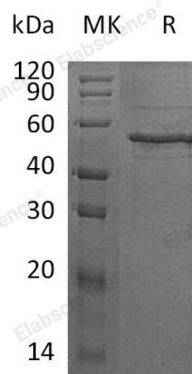
Description

Species	Human
Mol_Mass	46.0 kDa
Accession	Q6UXH0
Bio-activity	Not validated for activity

Properties

Purity	> 80 % as determined by reducing SDS-PAGE.
Endotoxin	< 1.0 EU per μ g of the protein as determined by the LAL method.
Storage	Generally, lyophilized proteins are stable for up to 12 months when stored at -20 to -80 °C. Reconstituted protein solution can be stored at 4-8°C for 2-7 days. Aliquots of reconstituted samples are stable at < -20°C for 3 months.
Shipping	This product is provided as lyophilized powder which is shipped with ice packs.
Formulation	Lyophilized from a 0.2 μ m filtered solution of 20mM Histidine-HCl, 6% Trehalose, 4% Mannitol, 50mM NaCl, 0.05% Tween 80, pH6.0. Normally 5% - 8% trehalose, mannitol and 0.01% Tween 80 are added as protectants before lyophilization. Please refer to the specific buffer information in the printed manual.
Reconstitution	Please refer to the printed manual for detailed information.

Data



> 80 % as determined by reducing SDS-PAGE.

Background

The protein specifically promotes pancreatic beta cell proliferation and beta cell mass expansion, thereby improving glucose tolerance. It promotes pancreatic beta cell proliferation without insulin resistance. Also it acts as a blood lipid regulator by regulating serum triglyceride levels and possibly by promoting ANGPTL3 cleavage. It interacts with ANGPTL3. It predominantly expressed in liver and also expressed in adipose tissues. The ability of the protein to induce pancreatic beta cell proliferation is promising in diabetes therapy. Betatrophin treatment could supply or replace insulin injections by increasing the number of insulin-producing cells in diabetes.

For Research Use Only

A Reliable Research Partner in Life Science and Medicine
Tel:400-999-2100

Email:techsupport@elabscience.cn

Web:www.elabscience.cn

Rev. V3.5