

Recombinant Human ITM2B Protein (His Tag)

Catalog Number:PKSH032599



Note: Centrifuge before opening to ensure complete recovery of vial contents.

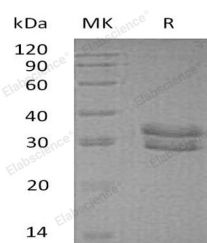
Description

Synonyms	Integral Membrane Protein 2B;Immature BRI2;imBRI2;Protein E25B;Transmembrane Protein BRI;Bri;ITM2B;BRI;BRI2
Species	Human
Expression Host	HEK293 Cells
Sequence	Tyr76-Ser266
Accession	Q9Y287
Calculated Molecular Weight	23.3 kDa
Observed molecular weight	29-33 kDa
Tag	C-His

Properties

Purity	> 95 % as determined by reducing SDS-PAGE.
Endotoxin	< 1.0 EU per µg of the protein as determined by the LAL method.
Storage	Store at < -20°C, stable for 6 months. Please minimize freeze-thaw cycles.
Shipping	This product is provided as liquid. It is shipped at frozen temperature with blue ice/gel packs. Upon receipt, store it immediately at < - 20°C.
Formulation	Supplied as a 0.2 µm filtered solution of 20mM Acetate, 10% Trehalose, 25mM NaCl, 10% Glycerol, 0.05% Tween 80, pH 4.5.
Reconstitution	Not Applicable

Data



> 95 % as determined by reducing SDS-PAGE.

Background

Integral Membrane Protein 2B (ITM2B) is expressed in the Golgi and on the cell surface. ITM2B forms homodimer through disulfide-linked interaction with SPPL2A, SPPL2B and APP. ITM2B is expressed in brain and the other tissues. Defects in ITM2B cause cerebral amyloid angiopathy ITM2B-related type 1(CAA-ITM2B1) and amyloid angiopathy ITM2B-related type 2(CAA-ITM2B2). CAA-ITM2B1 is characterized by amyloid deposition in the walls of cerebral blood vessels and neurodegeneration in the central nervous system. CAA-ITM2B2 characterized by amyloid deposition in the walls of the blood vessels of the cerebrum, choroid plexus, cerebellum, spinal cord and retina.

For Research Use Only

A Reliable Research Partner in Life Science and Medicine

Toll-free: 1-888-852-8623

Web: www.elabscience.com

Tel: 1-832-243-6086

Email: techsupport@elabscience.com

Fax: 1-832-243-6017