

# FOLR1 Polyclonal Antibody

Catalog Number: E-AB-19878



**Note:** Centrifuge before opening to ensure complete recovery of vial contents.

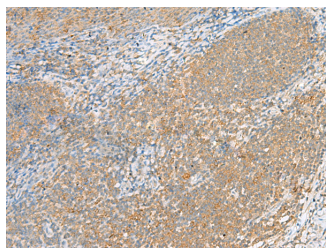
## Description

<b>Reactivity</b>	Human, Mouse
<b>Immunogen</b>	Synthetic peptide of human FOLR1
<b>Host</b>	Rabbit
<b>Isotype</b>	IgG
<b>Purification</b>	Antigen affinity purification
<b>Conjugation</b>	Unconjugated
<b>Formulation</b>	PBS with 0.05% NaN <sub>3</sub> and 40% Glycerol, pH7.4

## Applications Recommended Dilution

<b>IHC</b>	1:40-1:200
<b>ELISA</b>	1:5000-1:10000

## Data



Immunohistochemistry of paraffin-embedded Human tonsil tissue using FOLR1 Polyclonal Antibody at dilution of 1:80 (×200)

## Preparation & Storage

**Storage** Store at -20°C. Avoid freeze / thaw cycles.

## Background

Folate receptor 1 (FOLR1), also known as folate receptor alpha or adult folate-binding protein (FBP), is a 38-kDa glycoprotein belonging to the folate receptor family. The receptor binds to folate and reduced folic acid derivatives and mediates delivery of 5-methyltetrahydrofolate to the interior of cells. FOLR1 is a secreted protein that either anchors to membranes via a glycosyl-phosphatidylinositol linkage or exists in a soluble form. FOLR1 expression is often limited to the apical surfaces of epithelium in the lung, kidney and choroid plexus but is differentially overexpressed in a variety of solid tumors such as ovarian cancer, non-small cell lung cancer, breast cancer, kidney cancer and high-grade osteosarcoma.

## For Research Use Only

A Reliable Research Partner in Life Science and Medicine

Toll-free: 1-888-852-8623

Web: [www.elabscience.com](http://www.elabscience.com)

Tel: 1-832-243-6086

Email: [techsupport@elabscience.com](mailto:techsupport@elabscience.com)

Fax: 1-832-243-6017