

Elab Fluor® 700 Anti-Human CD50 Antibody[CBR-IC3/1]

Catalog Number: AN00318M1

Note: Centrifuge before opening to ensure complete recovery of vial contents.

Description

Reactivity	Human
Host	Mouse
Isotype	Mouse IgG1, κ
Clone No.	CBR-IC3/1
Isotype Control	Elab Fluor® 700 Mouse IgG1, κ Isotype Control[MOPC-21] [Product E-AB-F09792M1]
Conjugation	Elab Fluor® 700
Conjugation Information	Elab Fluor® 700 is designed to be excited by the Red laser (627-640 nm) and detected using an optical filter centered near 719 nm (e.g., a 725/40 nm bandpass filter).
Storage Buffer	Phosphate buffered solution, pH 7.2, containing 0.09% sodium azide and 1% BSA.

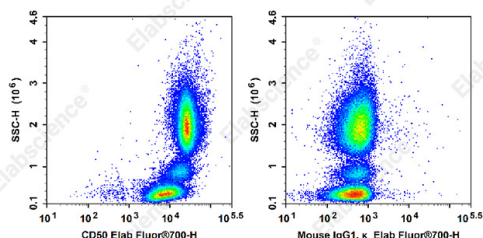
Applications

Recommended usage

FCM

Each lot of this antibody is quality control tested by flow cytometric analysis. **The amount of the reagent is suggested to be used 5 μL of antibody per test (million cells in 100 μL staining volume or per 100 μL of whole blood).** Please check your vial before the experiment. Since applications vary, the appropriate dilutions must be determined for individual use.

Data



Staining of normal human peripheral blood cells with Elab Fluor® 700 Anti-Human CD50 Antibody[CBR-IC3/1](left) or Elab Fluor® 700 Mouse IgG1, κ Isotype Control(right). Cells in the leucocyte gate were used for analysis.

Preparation & Storage

Storage	Keep as concentrated solution. This product can be stored at 2-8°C for 12 months. Please protected from prolonged exposure to light and do not freeze.
Shipping	Ice bag

Antigen Information

Alternate Names	ICAM-3
Uniprot ID	P32942
Gene ID	3385

For Research Use Only

Background

CD50 is a 120-140 kD type I membrane protein also known as intercellular adhesion molecule 3 (ICAM-3). It is broadly expressed on leukocytes, endothelial cells, and Langerhans cells. CD50 is a member of the Ig superfamily. It provides costimulatory signal for T cells and regulates cell adhesion through interaction with LFA-1 (CD11a/CD18, α L/ β 2) integrin.