

PCNA Monoclonal Antibody

catalog number: E-AB-48013

Note: Centrifuge before opening to ensure complete recovery of vial contents.

Description

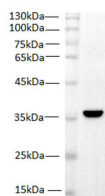
| | |
|---------------------|--|
| Reactivity | Zebrafish |
| Immunogen | Recombinant human PCNA protein expressed by E.coli |
| Host | Mouse |
| Isotype | IgG1 |
| Clone | 8B12 |
| Purification | Protein A/G Purification |
| Conjugation | Unconjugated |
| Buffer | PBS with 0.05% Proclin300, 1% protective protein and 50% glycerol, pH7.4 |

Applications

Recommended Dilution

| | |
|-----------|-------------|
| WB | 1:1000-2000 |
|-----------|-------------|

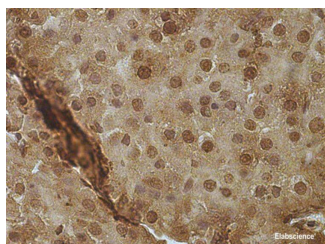
Data



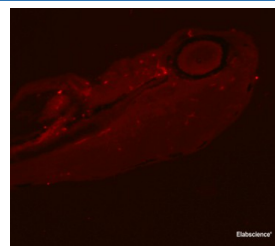
Western blot of Zebrafish whole lysates with anti-PCNA monoclonal antibody at dilution of 1:1000.

Observed-MW:36 kDa

Calculated-MW:30 kDa



Immunohistochemistry of Zebrafish paraffin embedded section with anti-PCNA mcab at dilution of 1:100.



Immunofluorescence of Zebrafish frozen section with anti-PCNA monoclonal antibody at dilution of 1:100.

Preparation & Storage

| | |
|-----------------|--|
| Storage | Store at -20°C Valid for 12 months. Avoid freeze / thaw cycles. |
| Shipping | The product is shipped with ice pack, upon receipt, store it immediately at the temperature recommended. |

Background

For Research Use Only

Tel: 400-999-2100

Web: www.elabscience.cn

Email: techsupport@elabscience.cn

Rev. V2.3

Proliferating cell nuclear antigen (PCNA) is a DNA clamp that acts as a processivity factor for DNA polymerase δ in eukaryotic cells and is essential for replication. PCNA is a homotrimer and achieves its processivity by encircling the DNA, where it acts as a scaffold to recruit proteins involved in DNA replication, DNA repair, chromatin remodeling and epigenetics. PCNA gene is often stably and constitutively expressed in most tissues and cells, it is commonly used as a loading control for western blot and other test.