

Purified Anti-Human CD180 Antibody[G28-8]

Catalog Number: GF002900P

Note: Centrifuge before opening to ensure complete recovery of vial contents.

Description

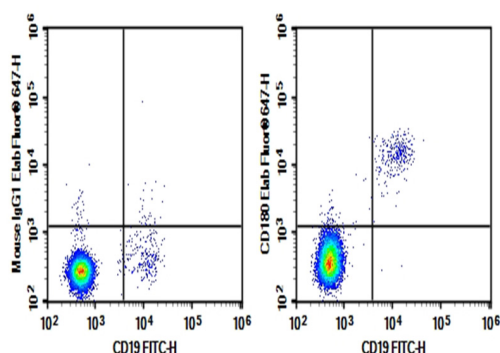
| | |
|--------------|---|
| Reactivity | Human |
| Immunogen | Recombinant Human CD180 protein |
| Host | Mouse |
| Isotype | Mouse IgG1, κ |
| Clone | G28-8 |
| Purification | >98%, Protein A/G purified |
| Conjugation | Unconjugated |
| Buffer | Phosphate-buffered solution, pH 7.2, containing 0.05% non-protein stabilizer. Dialyze to completely remove the stabilizer prior to labeling. |

Applications

Recommended Dilution

| | |
|-----|---|
| FCM | 2 $\mu\text{g/mL}$ (0.5×10^6 - 1×10^6 cells) |
|-----|---|

Data



Human peripheral blood lymphocytes were stained with 0.2 μg Purified Anti-Human CD180 Antibody[G28-8] (Right) and 0.2 μg Mouse IgG1, κ Isotype Control (Left), followed by

Elab Fluor® 647-conjugated Goat Anti-Mouse IgG Secondary Antibody, then anti-Human CD19 FITC-conjugated Monoclonal Antibody.

Preparation & Storage

| | |
|----------|--|
| Storage | Store at 4°C valid for 12 months or -20°C valid for long term storage, avoid freeze / thaw cycles. |
| Shipping | Ice bag |

Background

CD180, also known as RP105, is a 105 kD member of the toll-like receptor (TLR) family and is expressed on most B cells, monocytes/macrophages and dendritic cells. The TLR family's structural characteristics are critically involved in protein-protein signaling interactions leading to the activation of the innate immune system. Additionally, MD-1, a secretory protein, associates with CD180 (RP105) at the cell surface and this complex, in conjunction with TLR4, recognizes bacterial LPS. The human CD180 (RP105) gene maps to 5q12. The MHR73-11 antibody is able to activate B cells and to protect against irradiation- or dexamethasone-induced apoptosis.