

TPM2 Polyclonal Antibody

catalog number: E-AB-15658

Note: Centrifuge before opening to ensure complete recovery of vial contents.

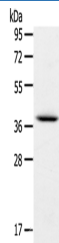
Description

Reactivity	Human
Immunogen	Synthetic peptide of human TPM2
Host	Rabbit
Isotype	IgG
Purification	Affinity purification
Buffer	Phosphate buffered solution, pH 7.4, containing 0.05% stabilizer and 50% glycerol.

Applications

Applications	Recommended Dilution
WB	1:500-1:2000
IHC	1:50-1:200

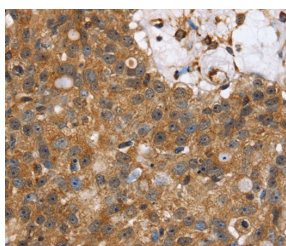
Data



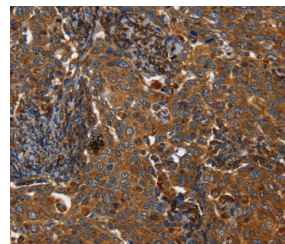
Western Blot analysis of Human cervical cancer tissue using TPM2 Polyclonal Antibody at dilution of 1:750

Observed-MW: Refer to figures

Calculated-MW: 33 kDa



Immunohistochemistry of paraffin-embedded Human lung cancer using TPM2 Polyclonal Antibody at dilution of 1:35



Immunohistochemistry of paraffin-embedded Human liver cancer using TPM2 Polyclonal Antibody at dilution of 1:35

Preparation & Storage

Storage	Store at -20°C Valid for 12 months. Avoid freeze / thaw cycles.
Shipping	The product is shipped with ice pack, upon receipt, store it immediately at the temperature recommended.

Background

For Research Use Only

This gene encodes beta-tropomyosin, a member of the actin filament binding protein family, and mainly expressed in slow, type 1 muscle fibers. Mutations in this gene can alter the expression of other sarcomeric tropomyosin proteins, and cause cap disease, nemaline myopathy and distal arthrogryposis syndromes. Alternatively spliced transcript variants encoding different isoforms have been found for this gene. TPM2 has been shown to interact with RRAD, PDLIM7 and TPM1.

For Research Use Only

Toll-free: 1-888-852-8623
Web: www.elabscience.com

Tel: 1-832-243-6086
Email: techsupport@elabscience.com

Fax: 1-832-243-6017

Rev. V1.7