

Recombinant LC3B Monoclonal Antibody

catalog number: **AN301035L**

Note: Centrifuge before opening to ensure complete recovery of vial contents.

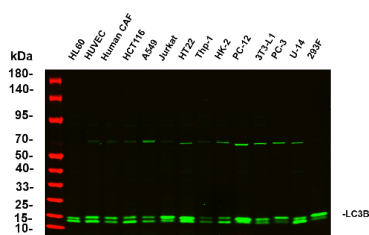
Description

Reactivity	Human;Mouse;Rat
Immunogen	Recombinant Human LC3B protein
Host	Rabbit
Isotype	IgG, κ
Clone	5A10
Purification	Protein A
Buffer	PBS, 50% glycerol, 0.05% Proclin 300, 0.05% protein protectant.

Applications

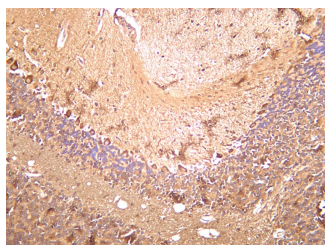
Applications	Recommended Dilution
IHC	1:200-1:1000
WB	1:1000-1:5000
IF	1:200-1:1000
ELISA	1:5000-1:20000

Data

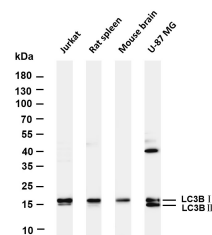


Various whole cell lysates were separated by 4-20% SDS-PAGE, and the primary antibody was used at 4°C, over night with a 1:5000 dilution. The Dylight 800-conjugated Goat anti-Rabbit antibody was used to detect the antibody. Lane1: HL60 Lane2: HUVEC Lane3: Human CAF Lane4: HCT116 Lane5: A549 Lane6: Jurkat Lane7: HT22 Lane8: THP-1 Lane9: HK-2 Lane10: PC-12 Lane11: 3T3-L1 Lane12: PC-3 Lane13: U-14 Lane14: 293F. Predicted band size: 14-16kDa

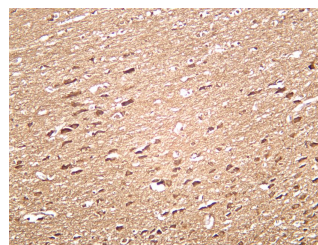
Observed band size: 14-16kDa



Mouse brain was stained with anti-LC3B rabbit antibody



Various whole cell lysates were separated by 4-20% SDS-PAGE, and the membrane was blotted with anti-LC3B antibody. The HRP-conjugated Goat anti-Rabbit IgG(H + L) antibody was used to detect the antibody. Lane 1:Jurkat Lane 2:Rat spleen Lane 3: Mouse brain Lane 3: U-87 MG Predicted band size: 14,16kDa Observed band size: 14,16kDa



Rat brain was stained with anti-LC3B rabbit antibody

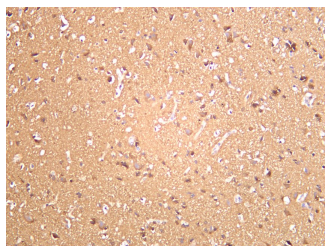
For Research Use Only

Toll-free: 1-888-852-8623
Web: www.elabscience.com

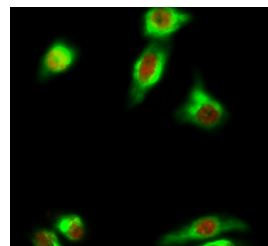
Tel: 1-832-243-6086
Email: techsupport@elabscience.com

Fax: 1-832-243-6017

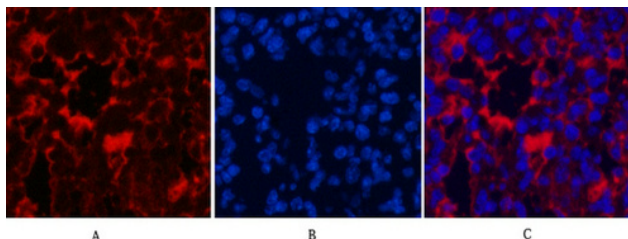
Rev. V1.1



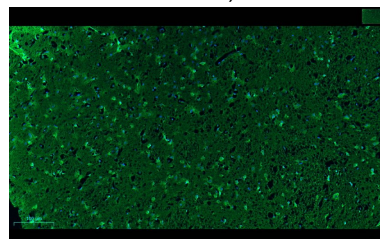
Human brain was stained with anti-LC3B rabbit antibody



Immunofluorescence analysis of Hela cell. 1, Cleaved-PARP-1 (D214) Antibody (red) was diluted at 1:200 (4°C overnight). LC3B Antibody (green) was diluted at 1:200 (4°C overnight). 2, Goat Anti Rabbit Alexa Fluor 594 was diluted at 1:1000 (room temperature, 50min). Goat Anti Mouse Alexa Fluor 488 was diluted at 1:1000 (room temperature, 50min).



Immunofluorescence analysis of Mouse-lung tissue. 1, LC3B Antibody (red) was diluted at 1:200 (4°C, overnight). 2, Cy3 labeled Secondary antibody was diluted at 1:300 (room temperature, 50min). 3, Picture B: DAPI (blue) 10min. Picture A: Target. Picture B: DAPI. Picture C: merge of A+B



rat brain was stained with anti-LC3B rabbit antibody

Preparation & Storage

Storage	Store at -20°C Valid for 12 months. Avoid freeze / thaw cycles.
Shipping	Ice bag

Background

The product of this gene is a subunit of neuronal microtubule-associated MAP1A and MAP1B proteins, which are involved in microtubule assembly and important for neurogenesis. Studies on the rat homolog implicate a role for this gene in autophagy, a process that involves the bulk degradation of cytoplasmic component.

For Research Use Only