

MYDGF Polyclonal Antibody

Catalog Number:E-AB-17915



Note: Centrifuge before opening to ensure complete recovery of vial contents.

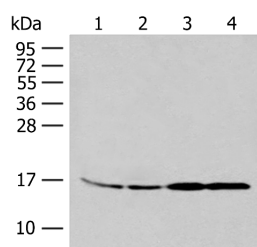
Description

| | |
|---------------------|--|
| Reactivity | Human, Mouse |
| Immunogen | Synthetic peptide of human MYDGF |
| Host | Rabbit |
| Isotype | IgG |
| Purification | Antigen affinity purification |
| Conjugation | Unconjugated |
| Formulation | PBS with 0.05% NaN ₃ and 40% Glycerol,pH7.4 |

Applications Recommended Dilution

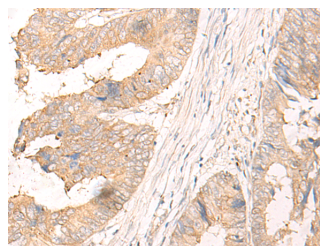
| | |
|--------------|----------------|
| WB | 1:500-1:2000 |
| IHC | 1:30-1:150 |
| ELISA | 1:5000-1:10000 |

Data



Western blot analysis of 293T and K562 cell Human between peritoneal stromal sarcoma tissue HEPG2 cell lysates using MYDGF Polyclonal Antibody at dilution of 1:250

Observed MW:Refer to figures
Calculated Mw:19 kDa



Immunohistochemistry of paraffin-embedded Human colorectal cancer tissue using MYDGF Polyclonal Antibody at dilution of 1:25(×200)

Preparation & Storage

Storage Store at -20°C. Avoid freeze / thaw cycles.

Background

The protein encoded by this gene was previously thought to support proliferation of lymphoid cells and was considered an interleukin. However, this activity has not been reproducible and the function of this protein is currently unknown.

For Research Use Only

A Reliable Research Partner in Life Science and Medicine

Toll-free: 1-888-852-8623

Web: www.elabscience.com

Tel: 1-832-243-6086

Email: techsupport@elabscience.com

Fax: 1-832-243-6017