

# Recombinant Human TLK2/PKU-ALPHA Protein

Catalog Number:PKSH030362



**Note:** Centrifuge before opening to ensure complete recovery of vial contents.

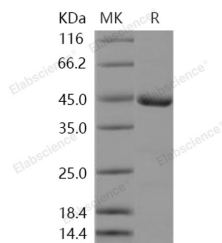
## Description

<b>Synonyms</b>	HsHPK;PKU-ALPHA
<b>Species</b>	Human
<b>Expression Host</b>	Baculovirus-Insect Cells
<b>Sequence</b>	Leu 397-Asn772
<b>Accession</b>	Q86UE8-1
<b>Calculated Molecular Weight</b>	43.6 kDa
<b>Observed molecular weight</b>	44 kDa
<b>Tag</b>	None

## Properties

<b>Purity</b>	> 95 % as determined by reducing SDS-PAGE.
<b>Endotoxin</b>	< 1.0 EU per µg of the protein as determined by the LAL method.
<b>Storage</b>	Store at < -20°C, stable for 6 months. Please minimize freeze-thaw cycles.
<b>Shipping</b>	This product is provided as liquid. It is shipped at frozen temperature with blue ice/gel packs. Upon receipt, store it immediately at < - 20°C.
<b>Formulation</b>	Supplied as sterile solution of 20mM Tris, 500mM NaCl, 3mM DTT, 10% glycerol, pH 8.0
<b>Reconstitution</b>	Not Applicable

## Data



> 95 % as determined by reducing SDS-PAGE.

## Background

Serine / threonine-protein kinase tousled-like 2; also known as PKU-alpha; Tousled-like kinase 2 and TLK2; is a nucleus protein which belongs to the protein kinase superfamily and Ser/Thr protein kinase family. The tousled-like kinases are an evolutionarily conserved family of proteins implicated in DNA repair; DNA replication and mitosis in metazoans and plants. Their absence from the yeasts and other eukaryotic 'microbes' suggests a specific role for them in the development of multicellular organisms. Tousled-like kinase 2 / TLK2 is widely expressed. It is present in fetal placenta; liver; kidney; pancreas; heart and skeletal muscle. It is also found in adult cell lines. Tousled-like kinase 2 / TLK2 contains one protein kinase domain. Tousled-like kinase 2 / TLK2 is rapidly and transiently inhibited by phosphorylation following the generation of DNA double-stranded breaks during S-phase. This is cell cycle checkpoint and ATM-pathway dependent and appears to regulate processes involved in chromatin assembly.

## For Research Use Only

A Reliable Research Partner in Life Science and Medicine

Toll-free: 1-888-852-8623

Web: [www.elabscience.com](http://www.elabscience.com)

Tel: 1-832-243-6086

Email: [techsupport@elabscience.com](mailto:techsupport@elabscience.com)

Fax: 1-832-243-6017