

Recombinant Human CCL8/MCP-2 Protein (Yeast, His Tag)



Catalog Number: PKSH030435

Note: Centrifuge before opening to ensure complete recovery of vial contents.

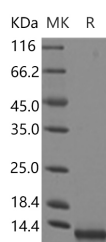
Description

| | |
|------------------------------------|--|
| Synonyms | C-C Motif Chemokine 8; HC14; Monocyte Chemoattractant Protein 2; Monocyte Chemotactic Protein 2; MCP-2; Small-Inducible Cytokine A8; CCL8; MCP2; SCYA10; SCYA8; HC14 |
| Species | Human |
| Expression Host | Yeast |
| Sequence | Gln24-Pro99 |
| Accession | NP_005614.2 |
| Calculated Molecular Weight | 10.3 kDa |
| Tag | C-His |

Properties

| | |
|-----------------------|---|
| Purity | > 95 % as determined by reducing SDS-PAGE. |
| Endotoxin | Please contact us for more information. |
| Storage | Generally, lyophilized proteins are stable for up to 12 months when stored at -20 to -80°C. Reconstituted protein solution can be stored at 4-8°C for 2-7 days. Aliquots of reconstituted samples are stable at < -20°C for 3 months. |
| Shipping | This product is provided as lyophilized powder which is shipped with ice packs. |
| Formulation | Lyophilized from sterile PBS, pH 7.4 Normally 5 % - 8 % trehalose, mannitol and 0.01% Tween80 are added as protectants before lyophilization. Please refer to the specific buffer information in the printed manual. |
| Reconstitution | Please refer to the printed manual for detailed information. |

Data



> 95 % as determined by reducing SDS-PAGE.

Background

Chemokines are a family of small chemotactic cytokines, or proteins secreted by cells. Chemokines share the same structure similarities such as small size, and the presence of four cysteine residues in conserved locations in order to form their 3-dimensional shape. Some of the chemokines are considered pro-inflammatory which can be induced to recruit cells of the immune system to a site of infection during an immune response, while others are considered homeostatic and are implied in controlling the migration of cells during normal processes of tissue maintenance and development. There are four members of the chemokine family: C-C kemokines, C kemokines, CXC kemokines and CX3C kemokines. The C-C kemokines have two cysteines nearby the amino terminus. There have been at least 27 distinct members of this subgroup reported for mammals, called C-C chemokine ligands-1 to 28. Chemokine ligand 8 (CCL8), also known as

For Research Use Only

A Reliable Research Partner in Life Science and Medicine

Toll-free: 1-888-852-8623

Web: www.elabscience.com

Tel: 1-832-243-6086

Email: techsupport@elabscience.com

Fax: 1-832-243-6017

Recombinant Human CCL8/MCP-2 Protein (Yeast, His Tag)



Catalog Number:PKSH030435

monocyte chemoattractant protein 2 (MCP-2), is a small cytokine belonging to the C-C chemokine family. CCL8 functions to activate different immune cells, including mast cells, eosinophils and basophils which are involved in allergic responses, monocytes, and T cells and NK cells which are involved in the inflammatory response. CCL8's ability achieves by binding to different cell surface receptors termed chemokine receptors including CCR1, CCR2B and CCR5. It has been reported that CCL8 is a potent inhibitor of HIV-1 by virtue of its binding to CCR5 which is one of the major co-receptors for HIV-1.

For Research Use Only

A Reliable Research Partner in Life Science and Medicine

Toll-free: 1-888-852-8623

Web: www.elabscience.com

Tel: 1-832-243-6086

Email: techsupport@elabscience.com

Fax: 1-832-243-6017