

## CWC22 Polyclonal Antibody

**catalog number: E-AB-64462**

**Note:** Centrifuge before opening to ensure complete recovery of vial contents.

### Description

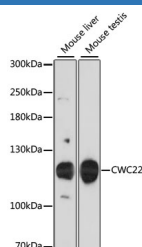
<b>Reactivity</b>	Mouse
<b>Immunogen</b>	Recombinant fusion protein of human CWC22 (NP_065994.1).
<b>Host</b>	Rabbit
<b>Isotype</b>	IgG
<b>Purification</b>	Affinity purification
<b>Buffer</b>	Phosphate buffered solution, pH 7.4, containing 0.05% stabilizer and 50% glycerol.

### Applications

### Recommended Dilution

<b>WB</b>	1:1000-1:2000
-----------	---------------

### Data



Western blot analysis of extracts of various cell lines using CWC22 Polyclonal Antibody at dilution of 1:3000.

**Observed-MV:110 kDa**

**Calculated-MV:105 kDa**

### Preparation & Storage

<b>Storage</b>	Store at -20°C Valid for 12 months. Avoid freeze / thaw cycles.
<b>Shipping</b>	The product is shipped with ice pack, upon receipt, store it immediately at the temperature recommended.

### Background

CWC22 (CWC22 Spliceosome Associated Protein Homolog) is a Protein Coding gene. Diseases associated with CWC22 include Hard Palate Cancer and Bruxism. Among its related pathways are Gene Expression and mRNA Splicing - Major Pathway. Gene Ontology (GO) annotations related to this gene include RNA binding and binding. An important paralog of this gene is NOM1.

### For Research Use Only