

## Recombinant Human CFHR4 Protein (His Tag)

**Catalog Number:** PKSH033710

**Note:** Centrifuge before opening to ensure complete recovery of vial contents.

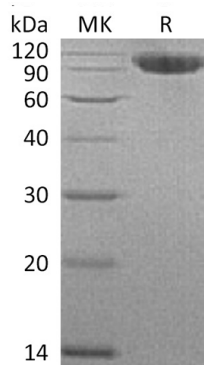
### Description

<b>Species</b>	Human
<b>Source</b>	HEK293 Cells-derived Human CFHR4 protein Glu20-Glu578, with an C-terminal His
<b>Calculated MW</b>	64.1 kDa
<b>Observed MW</b>	90-110 kDa
<b>Accession</b>	Q92496
<b>Bio-activity</b>	Not validated for activity

### Properties

<b>Purity</b>	> 95 % as determined by reducing SDS-PAGE.
<b>Endotoxin</b>	< 1.0 EU per µg of the protein as determined by the LAL method.
<b>Storage</b>	Generally, lyophilized proteins are stable for up to 12 months when stored at -20 to -80 °C. Reconstituted protein solution can be stored at 4-8°C for 2-7 days. Aliquots of reconstituted samples are stable at < -20°C for 3 months.
<b>Shipping</b>	This product is provided as lyophilized powder which is shipped with ice packs.
<b>Formulation</b>	Lyophilized from a 0.2 µm filtered solution of PBS, pH 7.4. Normally 5% - 8% trehalose, mannitol and 0.01% Tween 80 are added as protectants before lyophilization. Please refer to the specific buffer information in the printed manual.
<b>Reconstitution</b>	Please refer to the printed manual for detailed information.

### Data



> 95 % as determined by reducing SDS-PAGE.

### Background

Complement factor H-related protein 4 is a protein that in humans is encoded by the CFHR4 gene. It is a secreted protein that belongs to the complement factor H protein family. Members of the H-related protein family are exclusively composed of individually folded protein domains. CFHR4 is synthesized as a 578 amino acid precursor that contains an 19 amino acid signal peptide and a 569 amino acid mature chain. Human CFHR4 is involved in complement regulation. It can associate with lipoproteins and may play a role in lipid metabolism.

### For Research Use Only

Toll-free: 1-888-852-8623  
Web: [www.elabscience.com](http://www.elabscience.com)

Tel: 1-832-243-6086  
Email: [techsupport@elabscience.com](mailto:techsupport@elabscience.com)

Fax: 1-832-243-6017

Rev. V3.6