

## Recombinant Human UQCRH Protein (GST Tag)

**Catalog Number:** PKSH032335

**Note:** Centrifuge before opening to ensure complete recovery of vial contents.

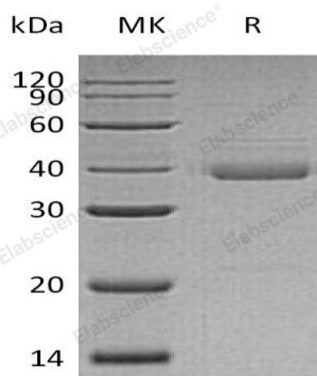
### Description

<b>Species</b>	Human
<b>Source</b>	E.coli-derived Human UQCRH protein Met 1-Lys91, with an N-terminal GST
<b>Calculated MW</b>	37.5 kDa
<b>Observed MW</b>	31-55 kDa
<b>Accession</b>	P07919
<b>Bio-activity</b>	Not validated for activity

### Properties

<b>Purity</b>	> 95 % as determined by reducing SDS-PAGE.
<b>Endotoxin</b>	< 1.0 EU per µg of the protein as determined by the LAL method.
<b>Storage</b>	Generally, lyophilized proteins are stable for up to 12 months when stored at -20 to -80 °C. Reconstituted protein solution can be stored at 4-8°C for 2-7 days. Aliquots of reconstituted samples are stable at < -20°C for 3 months.
<b>Shipping</b>	This product is provided as lyophilized powder which is shipped with ice packs.
<b>Formulation</b>	Lyophilized from a 0.2 µm filtered solution of PBS, pH 7.4. Normally 5% - 8% trehalose, mannitol and 0.01% Tween 80 are added as protectants before lyophilization.
<b>Reconstitution</b>	Please refer to the specific buffer information in the printed manual. Please refer to the printed manual for detailed information.

### Data



> 95 % as determined by reducing SDS-PAGE.

### Background

Cytochrome b-c1 complex subunit 6, mitochondrial (UQCRH) belongs to the UQCRH/QCR6 family, it is a subunit of the respiratory chain protein Ubiquinol Cytochrome c Reductase. This is a component of the ubiquinol-cytochrome c reductase complex (complex III or cytochrome b-c1 complex), which is part of the mitochondrial respiratory chain. UQCRH may mediate formation of the complex between cytochromes c and c1. It may mediate formation of the complex between cytochromes c and c1.

### For Research Use Only