

## TMEM248 Polyclonal Antibody

catalog number: E-AB-52601

**Note:** Centrifuge before opening to ensure complete recovery of vial contents.

### Description

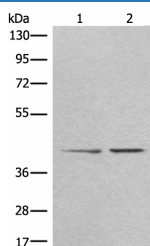
|                     |  |
|---------------------|--|
| <b>Reactivity</b>   | Human;Mouse;Rat  |
| <b>Immunogen</b>    | Fusion protein of human TMEM248  |
| <b>Host</b>         | Rabbit   |
| <b>Isotype</b>      | IgG  |
| <b>Purification</b> | Antigen affinity purification  |
| <b>Conjugation</b>  | Unconjugated   |
| <b>Buffer</b>       | Phosphate buffered solution, pH 7.4, containing 0.05% stabilizer and 50% glycerol. |

### Applications

### Recommended Dilution

|            |              |
|------------|--------------|
| <b>WB</b>  | 1:500-1:2000 |
| <b>IHC</b> | 1:25-1:100   |

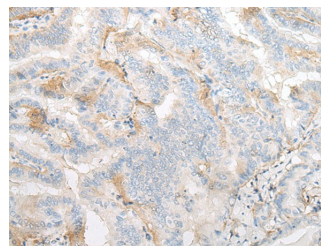
### Data



Western blot analysis of A172 and HEPG2 cell lysates using TMEM248 Polyclonal Antibody at dilution of 1:300

**Observed-MW:Refer to figures**

**Calculated-MW:35 kDa**



Immunohistochemistry of paraffin-embedded Human thyroid cancer tissue using TMEM248 Polyclonal Antibody at dilution of 1:25(×200)

### Preparation & Storage

|                 |  |
|-----------------|--|
| <b>Storage</b>  | Store at -20°C Valid for 12 months. Avoid freeze / thaw cycles.  |
| <b>Shipping</b> | The product is shipped with ice pack, upon receipt, store it immediately at the temperature recommended. |

### Background

The function of this protein remains unknown.