

# EMSY Polyclonal Antibody

catalog number: E-AB-17907

**Note:** Centrifuge before opening to ensure complete recovery of vial contents.

## Description

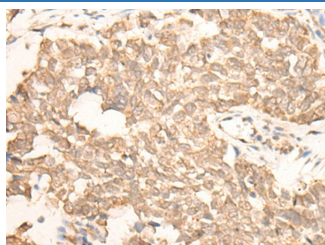
<b>Reactivity</b>	Human;Mouse
<b>Immunogen</b>	Synthetic peptide of human EMSY
<b>Host</b>	Rabbit
<b>Isotype</b>	IgG
<b>Purification</b>	Antigen affinity purification
<b>Conjugation</b>	Unconjugated
<b>buffer</b>	Phosphate buffered solution, pH 7.4, containing 0.05% stabilizer and 50% glycerol.

## Applications

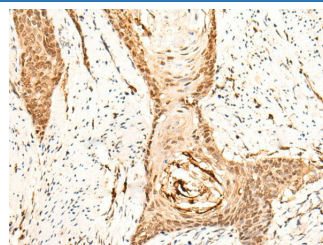
## Recommended Dilution

<b>IHC</b>	1:30-1:150
------------	------------

## Data



Immunohistochemistry of paraffin-embedded Human lung cancer tissue using EMSY Polyclonal Antibody at dilution of 1:25( $\times$ 200)



Immunohistochemistry of paraffin-embedded Human esophagus cancer tissue using EMSY Polyclonal Antibody at dilution of 1:25( $\times$ 200)

## Preparation & Storage

<b>Storage</b>	Store at -20°C Valid for 12 months. Avoid freeze / thaw cycles.
<b>Shipping</b>	The product is shipped with ice pack, upon receipt, store it immediately at the temperature recommended.

## Background

Regulator which is able to repress transcription, possibly via its interaction with a multiprotein chromatin remodeling complex that modifies the chromatin. Its interaction with BRCA2 suggests that it may play a central role in the DNA repair function of BRCA2. As part of a histone H3-specific methyltransferase complex may mediate ligand-dependent transcriptional activation by nuclear hormone receptors.

## For Research Use Only