

CD48/SLAMF2 Polyclonal Antibody(Capture/Detector)

catalog number: AN004590P



Note: Centrifuge before opening to ensure complete recovery of vial contents.

Description

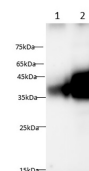
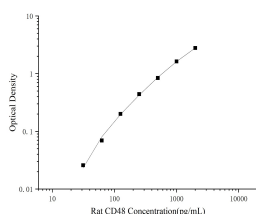
Reactivity	Rat
Immunogen	Recombinant Rat CD48/SLAMF2 Protein expressed by Mammalian
Host	Rabbit
Isotype	Rabbit IgG
Purification	Antigen Affinity Purification
Conjugation	Unconjugated
buffer	Phosphate buffered solution, pH 7.2, containing 0.05% proclin 300.

Applications

Recommended Dilution

ELISA Capture	2-8 µg/mL
ELISA Detector	0.1-0.4 µg/mL
WB	1:500-1:1000

Data



Sandwich ELISA-Recombinant Rat CD48/SLAMF2 Protein standard curve. Background subtracted standard curve using Anti-CD48/SLAMF2 antibody(AN004590P)(Capture), Anti-CD48/SLAMF2 antibody(AN004590P)(Detector). The reference range value is 31.25~2000pg/mL for rat.

Western blot with Anti CD48/SLAMF2 Polyclonal antibody at dilution of 1:1000. Lane 1: Rat spleen tissue lysate, Lane 2: Rat thymus tissue lysate.

Observed-MV:45-50 kDa
Calculated-MV:28 kDa

Preparation & Storage

Storage	Store at 4°C valid for 12 months or -20°C valid for long term storage, avoid freeze / thaw cycles.
Shipping	The product is shipped with ice pack, upon receipt, store it immediately at the temperature recommended.

Background

Cluster of Differentiation 48 (CD48), also known as SLAMF2, BCM-1 and BLAST-1, is a GPI-linked protein belonging to the CD2 subfamily of immunoglobulin superfamily molecules. CD2 and 2B4 (CD244) are known ligands for CD48. CD48 protein is expressed on most lineage-committed hematopoietic cells but not on hematopoietic stem cells or multipotent hematopoietic progenitors. CD48 protein performs biological functions in a variety of processes including adhesion, pathogen recognition, cellular activation, and cytokine regulation, and emerges as a critical effector molecule in immune responses.

For Research Use Only

A Reliable Research Partner in Life Science and Medicine
Tel: 400-999-2100

Email: techsupport@elabscience.cn

Web: www.elabscience.cn

Rev. V1.6