

## SSR4 Polyclonal Antibody

**catalog number: E-AB-92825**

**Note:** Centrifuge before opening to ensure complete recovery of vial contents.

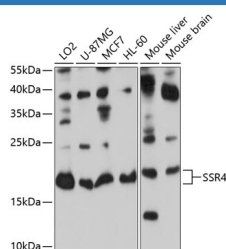
### Description

<b>Reactivity</b>	Human;Mouse
<b>Immunogen</b>	Recombinant fusion protein of human SSR4
<b>Host</b>	Rabbit
<b>Isotype</b>	IgG
<b>Purification</b>	Affinity purification
<b>Buffer</b>	Phosphate buffered solution, pH 7.4, containing 0.05% stabilizer and 50% glycerol.

### Applications Recommended Dilution

<b>WB</b>	1:200-1:2000
-----------	--------------

### Data



Western blot analysis of extracts of various cell lines using SSR4 Polyclonal Antibody at 1:1000 dilution.

**Observed-MV:19 kDa**

**Calculated-MV:18 kDa**

### Preparation & Storage

<b>Storage</b>	Store at -20°C Valid for 12 months. Avoid freeze / thaw cycles.
<b>Shipping</b>	The product is shipped with ice pack, upon receipt, store it immediately at the temperature recommended.

### Background

This gene encodes the delta subunit of the translocon-associated protein complex which is involved in translocating proteins across the endoplasmic reticulum membrane. The encoded protein is located in the Xq28 region and is arranged in a compact head-to-head manner with the isocitrate dehydrogenase 3 (NAD+) gamma gene and both genes are driven by a CpG-embedded bidirectional promoter. Alternate splicing results in multiple transcript variants.

### For Research Use Only