

FOXH1 Polyclonal Antibody

catalog number: E-AB-19880

Note: Centrifuge before opening to ensure complete recovery of vial contents.

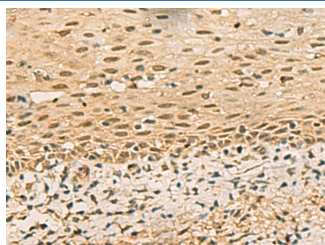
Description

| | |
|---------------------|--|
| Reactivity | Human |
| Immunogen | Synthetic peptide of human FOXH1 |
| Host | Rabbit |
| Isotype | IgG |
| Purification | Antigen affinity purification |
| Buffer | Phosphate buffered solution, pH 7.4, containing 0.05% stabilizer and 50% glycerol. |

Applications Recommended Dilution

| | |
|------------|------------|
| IHC | 1:50-1:100 |
|------------|------------|

Data



Immunohistochemistry of paraffin-embedded Human cervical cancer tissue using FOXH1 Polyclonal Antibody at dilution of 1:40(×200)

Preparation & Storage

| | |
|-----------------|--|
| Storage | Store at -20°C Valid for 12 months. Avoid freeze / thaw cycles. |
| Shipping | The product is shipped with ice pack, upon receipt, store it immediately at the temperature recommended. |

Background

FOXH1 encodes a human homolog of Xenopus forkhead activin signal transducer-1. FOXH1 protein binds SMAD2 and activates an activin response element via binding the DNA motif TGT(G/T)(T/G)ATT.

For Research Use Only