

SKI Polyclonal Antibody

catalog number: E-AB-17307

Note: Centrifuge before opening to ensure complete recovery of vial contents.

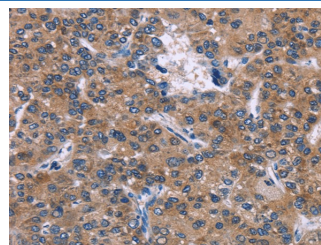
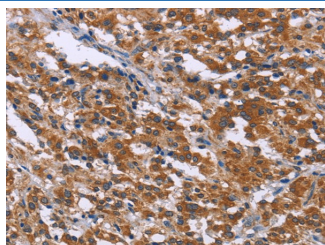
Description

Reactivity	Human;Mouse
Immunogen	Synthetic peptide of human SKI
Host	Rabbit
Isotype	IgG
Purification	Affinity purification
Buffer	Phosphate buffered solution, pH 7.4, containing 0.05% stabilizer and 50% glycerol.

Applications Recommended Dilution

IHC	1:100-300
------------	-----------

Data



Immunohistochemistry of paraffin-embedded Human thyroid cancer tissue using SKI Polyclonal Antibody at dilution 1:40

Immunohistochemistry of paraffin-embedded Human liver cancer tissue using SKI Polyclonal Antibody at dilution 1:40

Preparation & Storage

Storage	Store at -20°C Valid for 12 months. Avoid freeze / thaw cycles.
Shipping	The product is shipped with ice pack, upon receipt, store it immediately at the temperature recommended.

Background

This gene encodes the nuclear protooncogene protein homolog of avian sarcoma viral (v-ski) oncogene. It functions as a repressor of TGF-beta signaling, and may play a role in neural tube development and muscle differentiation.

For Research Use Only